



THE VAULT IN CANTON

OFFICE BUILDING INVESTMENT SALE



102 West 5th Street,
Canton, SD 57103



Building: 5,235 SF +/-
Lot: 0.29 Acres +/-



\$699,000
(\$133.52 / SF)

LOCATION

Positioned along HWY-18/5th Street, Canton's main thoroughfare, this multi-tenant building sits on the hard corner of 5th & Main Street. Surrounded by locally owned small-town businesses and adjacent to the Lincoln County Courthouse, this property sits at the town's busiest intersection. With convenient access to regional routes, Canton is centrally located near Harrisburg, Lennox, and Inwood, IA. Just 20 minutes from Sioux Falls, this investment combines small-town charm with proximity to big-city amenities.

DESCRIPTION

- Flexible options for an owner-investor or owner-occupant
- 2-story building with a lower level
- Current tenants include M.I. Nuts Bistro, a massage studio, travel agency, and tanning salon
- Main level common area lobby; common area restrooms on each floor
- Operating elevators
- 11 parking stalls
- Pylon and window sign opportunities
- RE Taxes: \$10,008.26 (2024 Taxes Payable in 2025)
- Built in 1978
- Updated electrical and a modern heating and cooling system
- Contact Broker for rent roll and financials

SCOTT BLOUNT 605.231.1882 | scott@lloydcompanies.com

RAQUEL BLOUNT SIO 605.728.9092 | raquel@lloydcompanies.com

Lloyd Companies Commercial Real Estate | 150 E. 4th Place Suite 600, Sioux Falls, SD 57104 | 605.323.2820

Find out more at LloydCompanies.com | Information deemed reliable, but not guaranteed.

UPPER LEVEL FLOOR PLAN

Concept only; subject to change



SCOTT BLOUNT 605.231.1882 | scott@lloydcompanies.com

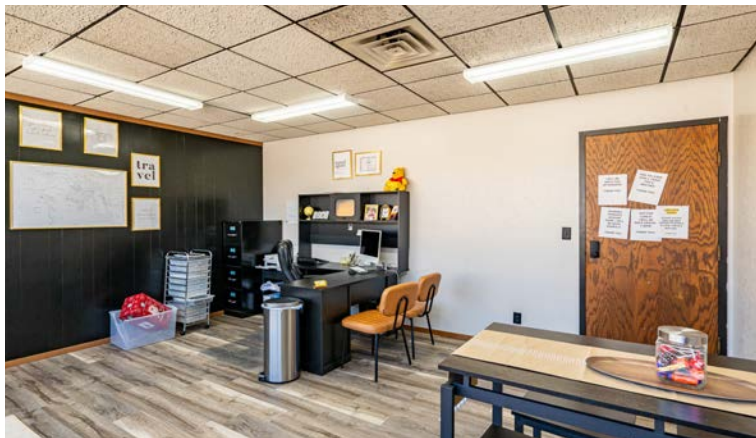
RAQUEL BLOUNT, SIOR 605.728.9092 | raquel@lloydcompanies.com

THE VAULT IN CANTON

OFFICE BUILDING INVESTMENT SALE



UPPER LEVEL PHOTOS



SCOTT BLOUNT 605.231.1882 | scott@lloydcompanies.com

RAQUEL BLOUNT, SIOR 605.728.9092 | raquel@lloydcompanies.com

Lloyd Companies Commercial Real Estate | 150 E. 4th Place Suite 600, Sioux Falls, SD 57104 | 605.323.2820

Find out more at LloydCompanies.com | Information deemed reliable, but not guaranteed.

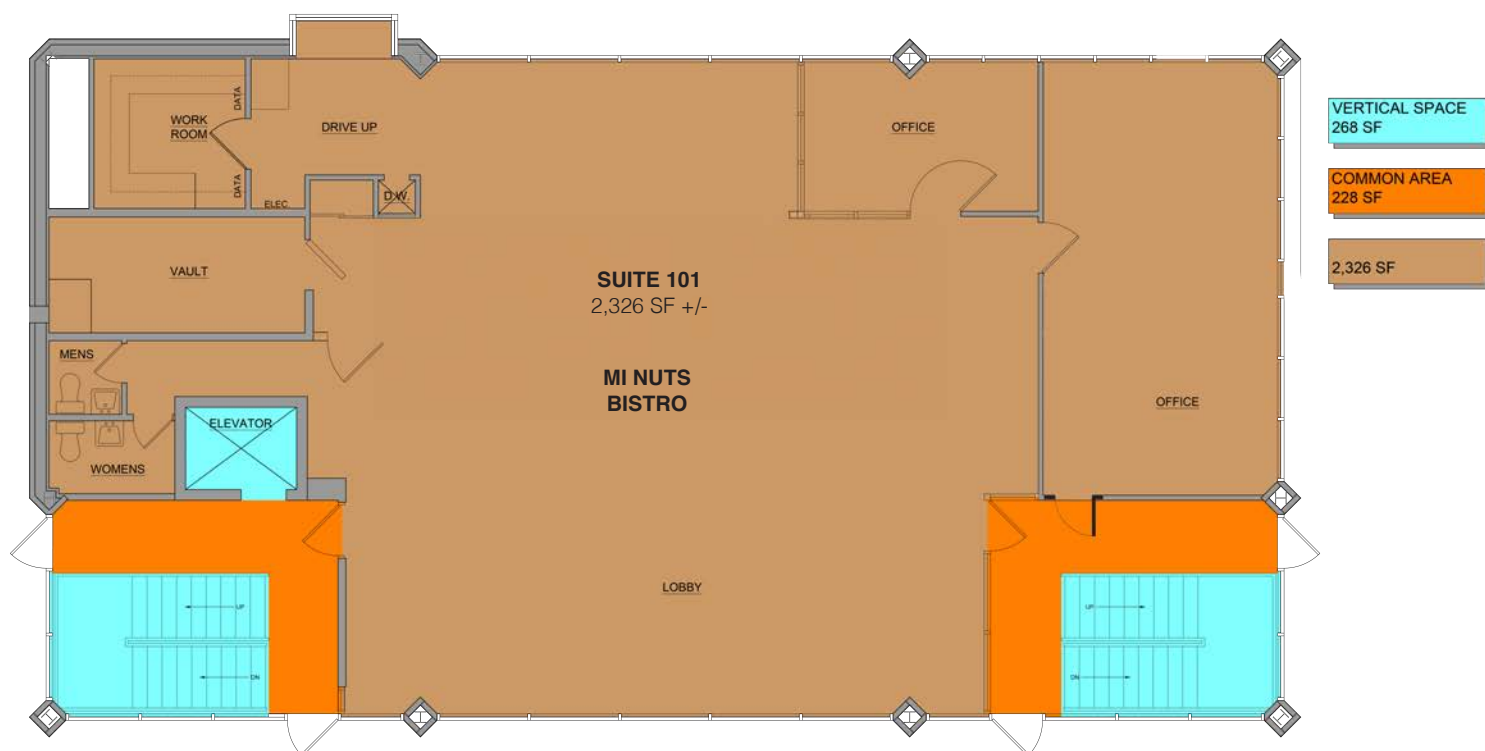
THE VAULT IN CANTON

OFFICE BUILDING INVESTMENT SALE



MAIN LEVEL FLOOR PLAN

Concept only; subject to change



SCOTT BLOUNT 605.231.1882 | scott@lloydcompanies.com

RAQUEL BLOUNT, SIOR 605.728.9092 | raquel@lloydcompanies.com

THE VAULT IN CANTON

OFFICE BUILDING INVESTMENT SALE



MAIN LEVEL PHOTOS



SCOTT BLOUNT 605.231.1882 | scott@lloydcompanies.com

RAQUEL BLOUNT, SIOR 605.728.9092 | raquel@lloydcompanies.com

Lloyd Companies Commercial Real Estate | 150 E. 4th Place Suite 600, Sioux Falls, SD 57104 | 605.323.2820

Find out more at LloydCompanies.com | Information deemed reliable, but not guaranteed.

LOWER LEVEL FLOOR PLAN

Concept only; subject to change



SCOTT BLOUNT 605.231.1882 | scott@lloydcompanies.com

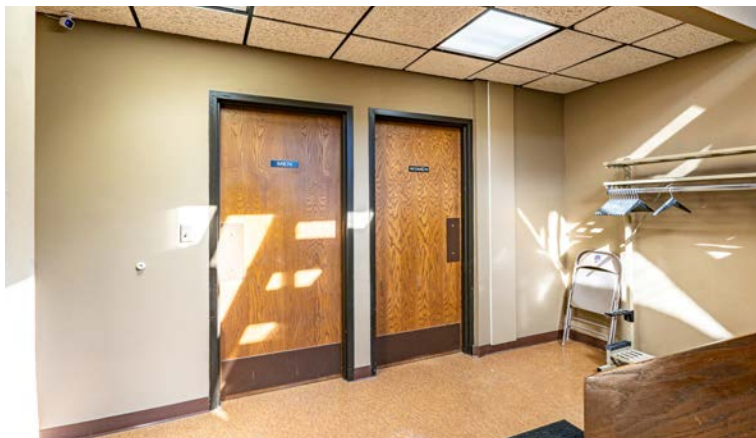
RAQUEL BLOUNT, SIOR 605.728.9092 | raquel@lloydcompanies.com

THE VAULT IN CANTON

OFFICE BUILDING INVESTMENT SALE



LOWER LEVEL PHOTOS



SCOTT BLOUNT 605.231.1882 | scott@lloydcompanies.com

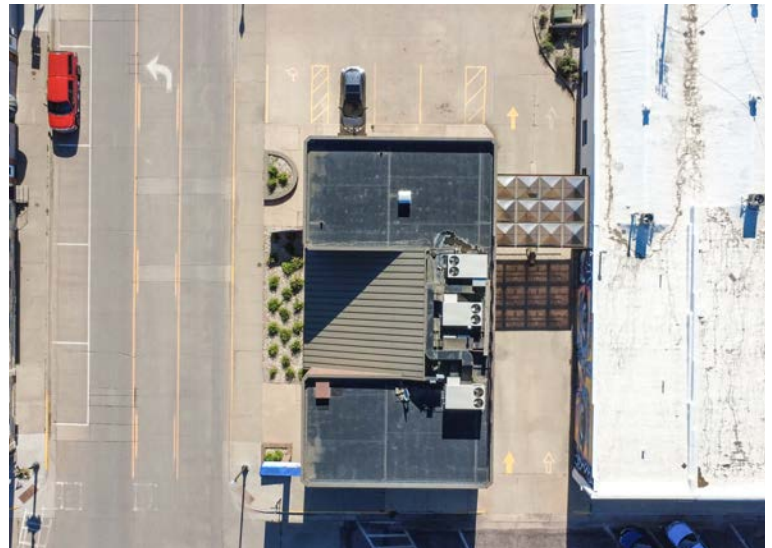
RAQUEL BLOUNT, SIOR 605.728.9092 | raquel@lloydcompanies.com

THE VAULT IN CANTON

OFFICE BUILDING INVESTMENT SALE



EXTERIOR PHOTOS



SCOTT BLOUNT 605.231.1882 | scott@lloydcompanies.com

RAQUEL BLOUNT, SIOR 605.728.9092 | raquel@lloydcompanies.com

THE VAULT IN CANTON

OFFICE BUILDING INVESTMENT SALE



PARCEL



SCOTT BLOUNT 605.231.1882 | scott@lloydcompanies.com

RAQUEL BLOUNT, SIOR 605.728.9092 | raquel@lloydcompanies.com

THE VAULT IN CANTON

OFFICE BUILDING INVESTMENT SALE



AREA MAP



SCOTT BLOUNT 605.231.1882 | scott@lloydcompanies.com

RAQUEL BLOUNT, SIOR 605.728.9092 | raquel@lloydcompanies.com

Lloyd Companies Commercial Real Estate | 150 E. 4th Place Suite 600, Sioux Falls, SD 57104 | 605.323.2820

Find out more at LloydCompanies.com | Information deemed reliable, but not guaranteed.

THE VAULT IN CANTON

OFFICE BUILDING INVESTMENT SALE



AERIEL



SCOTT BLOUNT 605.231.1882 | scott@lloydcompanies.com

RAQUEL BLOUNT, SIOR 605.728.9092 | raquel@lloydcompanies.com

Lloyd Companies Commercial Real Estate | 150 E. 4th Place Suite 600, Sioux Falls, SD 57104 | 605.323.2820

Find out more at LloydCompanies.com | Information deemed reliable, but not guaranteed.

THE VAULT IN CANTON

OFFICE BUILDING INVESTMENT SALE



CITY MAP



SCOTT BLOUNT 605.231.1882 | scott@lloydcompanies.com

RAQUEL BLOUNT, SIOR 605.728.9092 | raquel@lloydcompanies.com

Lloyd Companies Commercial Real Estate | 150 E. 4th Place Suite 600, Sioux Falls, SD 57104 | 605.323.2820

Find out more at LloydCompanies.com | Information deemed reliable, but not guaranteed.

MARKET PROFILE

	1 mile	3 miles	5 miles
Population Summary			
2010 Total Population	3,016	3,455	3,895
2020 Total Population	3,053	3,499	3,965
2020 Group Quarters	56	62	63
2025 Total Population	3,349	3,803	4,284
2025 Group Quarters	56	62	63
2030 Total Population	3,833	4,341	4,878
2024-2029 Annual Rate	2.74%	2.68%	2.63%
2025 Total Daytime Population	2,750	3,911	4,208
Workers	1,133	2,068	2,145
Residents	1,617	1,843	2,063
Household Summary			
2010 Households	1,227	1,399	1,554
2010 Average Household Size	2.39	2.40	2.44
2020 Total Households	1,232	1,405	1,564
2020 Average Household Size	2.43	2.45	2.49
2025 Households	1,323	1,496	1,661
2025 Average Household Size	2.49	2.50	2.54
2030 Households	1,507	1,700	1,884
2030 Average Household Size	2.51	2.52	2.56
2024-2029 Annual Rate	2.64%	2.59%	2.55%
2010 Families	806	927	1,044
2010 Average Family Size	2.97	2.97	3.01
2025 Families	847	961	1,082
2025 Average Family Size	3.15	3.15	3.18
2030 Families	957	1,084	1,218
2030 Average Family Size	3.18	3.18	3.21
2024-2029 Annual Rate	2.47%	2.44%	2.40%
2025 Housing Units	1,423	1,600	1,780
Owner Occupied Housing Units	69.4%	70.2%	71.2%
Renter Occupied Housing Units	23.6%	23.3%	22.1%
Vacant Housing Units	7.0%	6.5%	6.7%
2025 Population 25+ by Educational Attainment			
Total	2,263	2,568	2,889
Less than 9th Grade	1.2%	1.2%	1.1%
9th - 12th Grade, No Diploma	6.6%	7.0%	7.0%
High School Graduate	33.2%	33.3%	33.1%
GED/Alternative Credential	4.6%	4.4%	4.1%
Some College, No Degree	13.4%	13.4%	13.5%
Associate Degree	19.2%	19.6%	19.8%
Bachelor's Degree	16.2%	15.8%	15.8%
Graduate/Professional Degree	5.6%	5.5%	5.6%
Median Household Income			
2025	\$83,581	\$82,995	\$84,207
2030	\$100,889	\$100,508	\$101,534
Median Age			
2010	38.4	38.3	38.5
2020	39.1	39.2	39.3
2025	40.4	40.5	40.6
2030	41.4	41.5	41.6
2025 Population by Sex			
Males	1,687	1,923	2,177
Females	1,662	1,880	2,107
2030 Population by Sex			
Males	1,918	2,181	2,461
Females	1,915	2,160	2,417
Data for all businesses in area			
	1 mile	3 miles	5 miles
Total Businesses:	131	180	192
Total Employees:	1,383	1,968	2,075