



# OAKBROOK II SUITE 230

OFFICE SPACE FOR LEASE



5032 S Bur Oak Place, Suite 230,  
Sioux Falls, SD 57108



4,001 SF +/-



\$17.50 / SF NNN  
Estimated NNN: \$9.64 / SF

## LOCATION

Prime exposure located 0.5 mile off of the 57th Street/Louise Avenue intersection. Convenient location for employees and customers with easy access to I-229 and I-29, and multiple popular shopping centers, restaurants, and grocery stores nearby.

## DESCRIPTION

- Floor plan includes reception/waiting area, 6 offices, conference room, copier room, storage room, break room, patio, and a cleaning closet
- Modern finishes
- Common area restrooms, conference room and break room
- Pylon/monument signage available
- Accessible parking with 74 parking stalls on site and 5 reserved underground stalls
- Co-tenants include Waddell & Reed, Merkle Law Firm, Bankers Trust Company of South Dakota, and more
- Nearby neighborhood tenants include Vance Thompson Vision, Verizon, Vern Eide Honda, The UPS Store, Hilton Garden Inn, Qdoba, Jersey Mike's, Panera Bread and more
- Available December 1, 2024

**RAQUEL BLOUNT** sior 605.728.9092 | [raquel@lloydcompanies.com](mailto:raquel@lloydcompanies.com)

# OAKBROOK II SUITE 230

OFFICE SPACE FOR LEASE



## BUILDING COSTS

\*These numbers are based on estimates and are not guaranteed.

Size	Base Rent	NNN Est.	Total (Base + NNN) Est.	Yearly Total Est.	Monthly Total Est.
4,001 SF	\$17.50/SF NNN	\$9.64/SF	\$27.14/SF	\$108,587.14	\$9,048.93

## 2024 ESTIMATED NNN INFORMATION

NNN	Paid By:	Cost (\$/SF)
Real Estate Taxes	Paid by LL, Reimbursed by Tenant	\$3.42*
Property Insurance	Paid by LL, Reimbursed by Tenant	\$0.37*
Common Area Maintenance	Paid by LL, Reimbursed by Tenant	\$5.85*
<b>Total</b>	-	<b>\$9.64</b>
CAM includes the following utilities: Gas, Electric, Water & Sewer, and Trash		

## UTILITY INFORMATION

Utility	Paid By	Provider	Part of CAM	Separately Metered
Gas	Paid by LL, Reimbursed by Tenant	Mid-American Energy	Yes	No
Electricity	Paid by LL, Reimbursed by Tenant	Xcel Energy	Yes	No
Water & Sewer	Paid by LL, Reimbursed by Tenant	City of Sioux Falls	Yes	No
Trash	Paid by LL, Reimbursed by Tenant	Novak	Yes	No
Phone/Cable/Internet	Paid by Tenant	Tenant can select their preferred provider	No	N/A

**RAQUEL BLOUNT, SIOR** 605.728.9092 | raquel@lloydcompanies.com

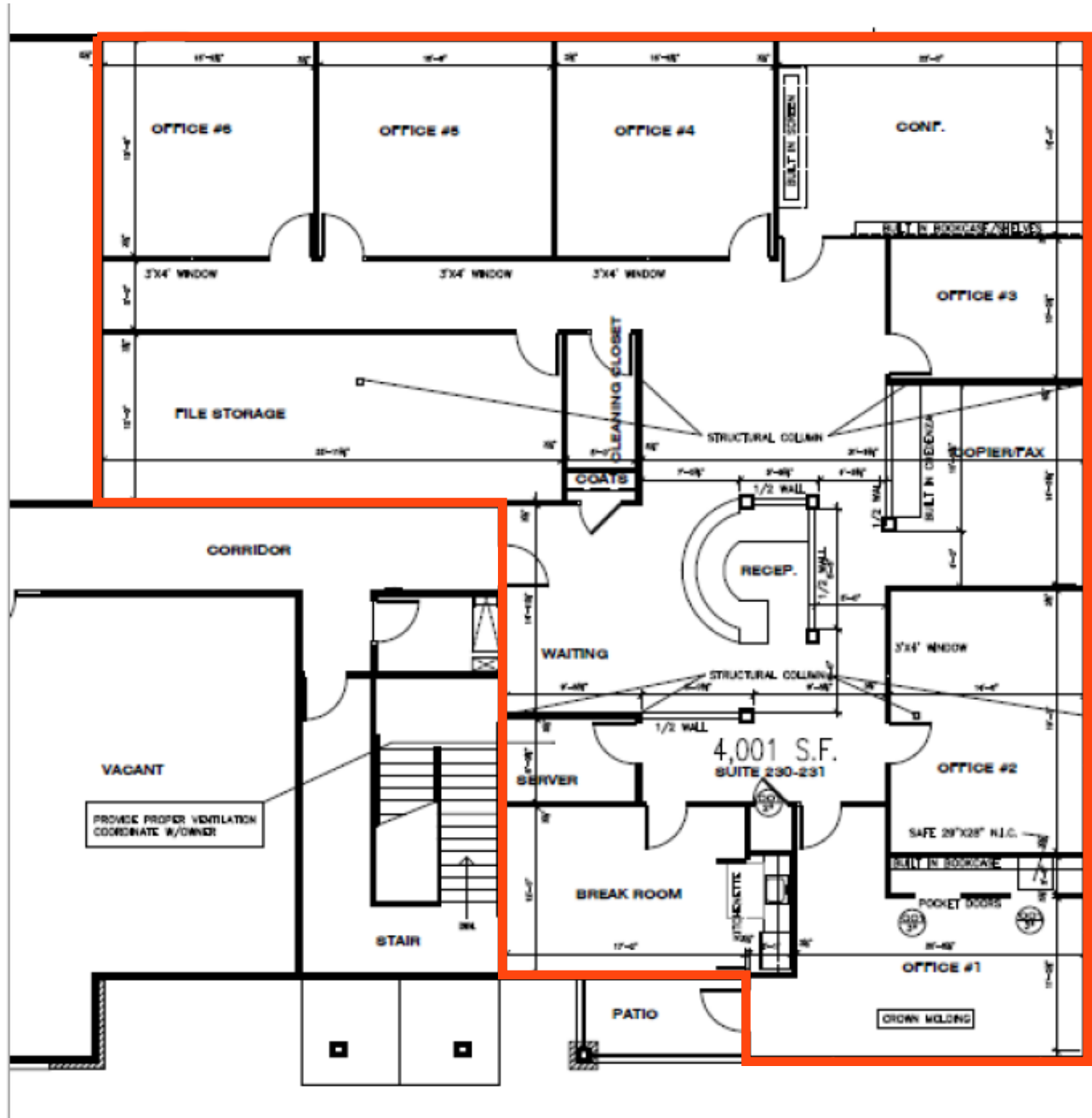
# OAKBROOK II SUITE 230

OFFICE SPACE FOR LEASE



## FLOOR PLAN

Concept only; subject to change



**RAQUEL BLOUNT, SIOR** 605.728.9092 | [raquel@lloydcompanies.com](mailto:raquel@lloydcompanies.com)



# OAKBROOK II SUITE 230

OFFICE SPACE FOR LEASE



## INTERIOR PHOTOS



**RAQUEL BLOUNT, SIOR** 605.728.9092 | [raquel@lloydcompanies.com](mailto:raquel@lloydcompanies.com)



# OAKBROOK II SUITE 230

OFFICE SPACE FOR LEASE



## COMMON AREAS



**RAQUEL BLOUNT, SIOR** 605.728.9092 | [raquel@lloydcompanies.com](mailto:raquel@lloydcompanies.com)



# OAKBROOK II SUITE 230

OFFICE SPACE FOR LEASE



## EXTERIOR PHOTOS



**RAQUEL BLOUNT, SIOR** 605.728.9092 | [raquel@lloydcompanies.com](mailto:raquel@lloydcompanies.com)



# OAKBROOK II SUITE 230

OFFICE SPACE FOR LEASE



## SITE MAP



**RAQUEL BLOUNT, SIOR** 605.728.9092 | [raquel@lloydcompanies.com](mailto:raquel@lloydcompanies.com)

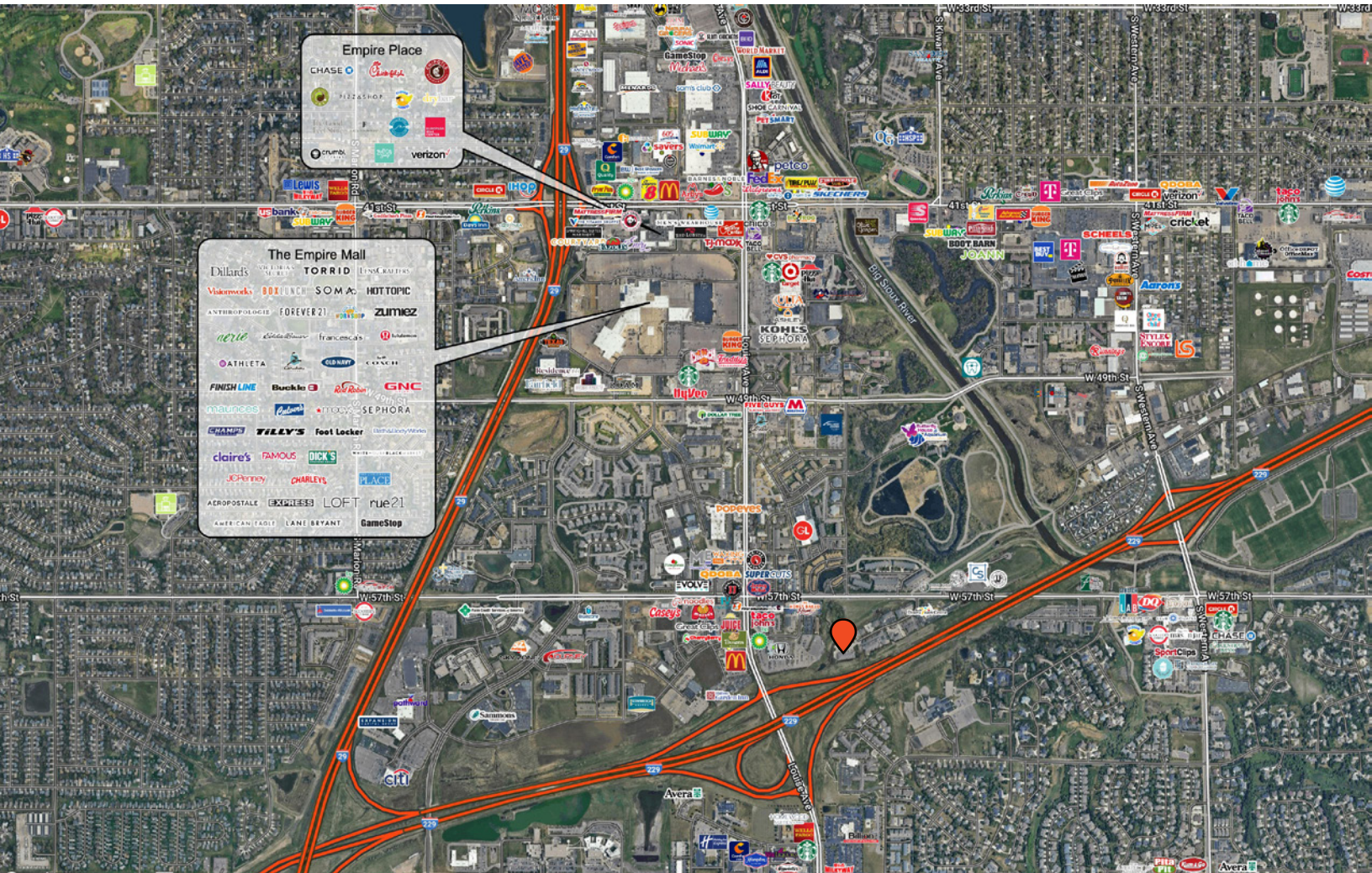


# OAKBROOK II SUITE 230

OFFICE SPACE FOR LEASE



## AREA MAP



**RAQUEL BLOUNT, SIOR** 605.728.9092 | [raquel@lloydcompanies.com](mailto:raquel@lloydcompanies.com)

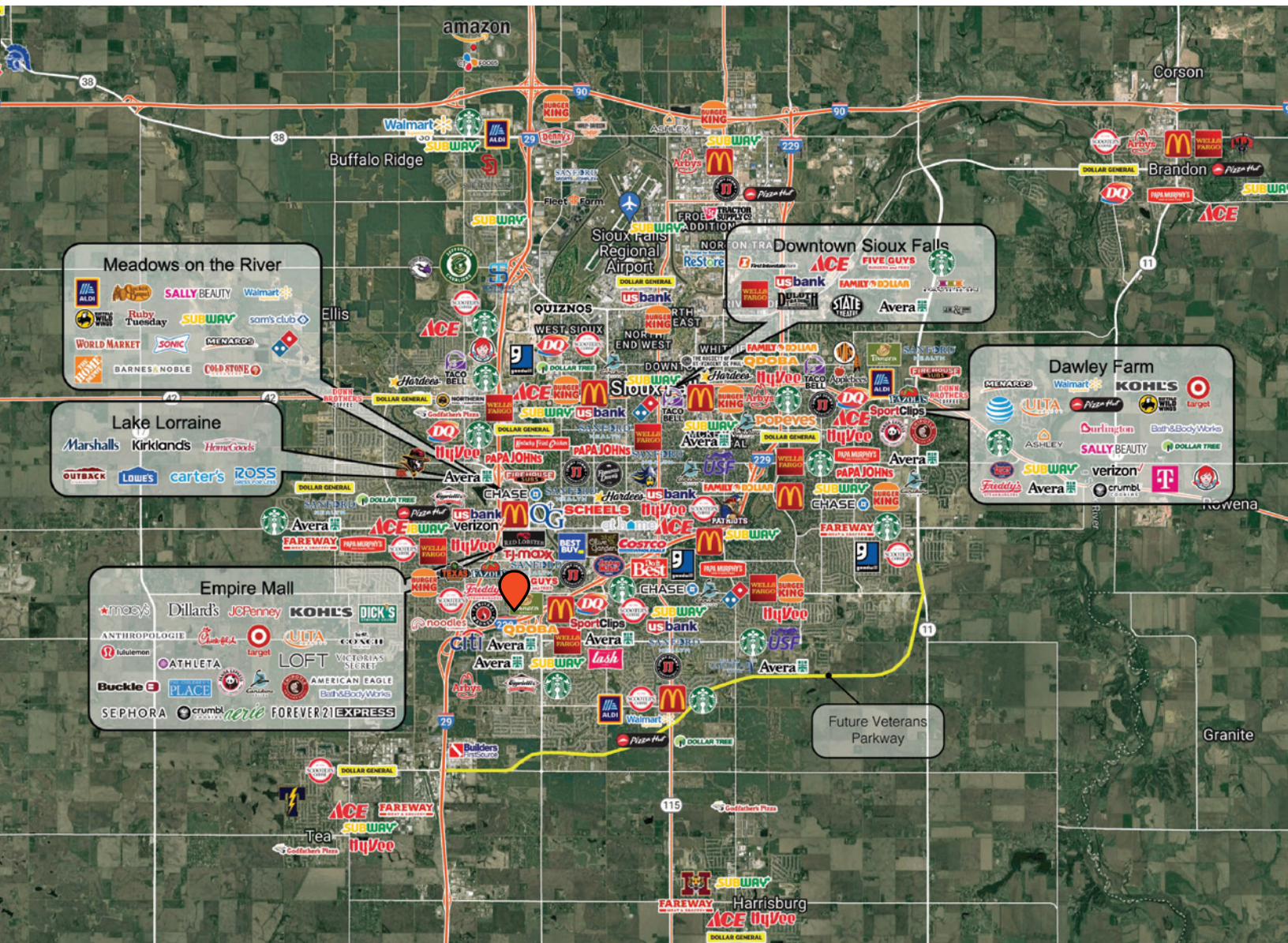


# OAKBROOK II SUITE 230

OFFICE SPACE FOR LEASE



## CITY MAP



**RAQUEL BLOUNT, SIOR** 605.728.9092 | [raquel@lloydcompanies.com](mailto:raquel@lloydcompanies.com)

Lloyd Companies Commercial Real Estate | 150 E. 4th Place Suite 600, Sioux Falls, SD 57104 | 605.323.2820  
Find out more at [LloydCompanies.com](http://LloydCompanies.com) | Information deemed reliable, but not guaranteed.

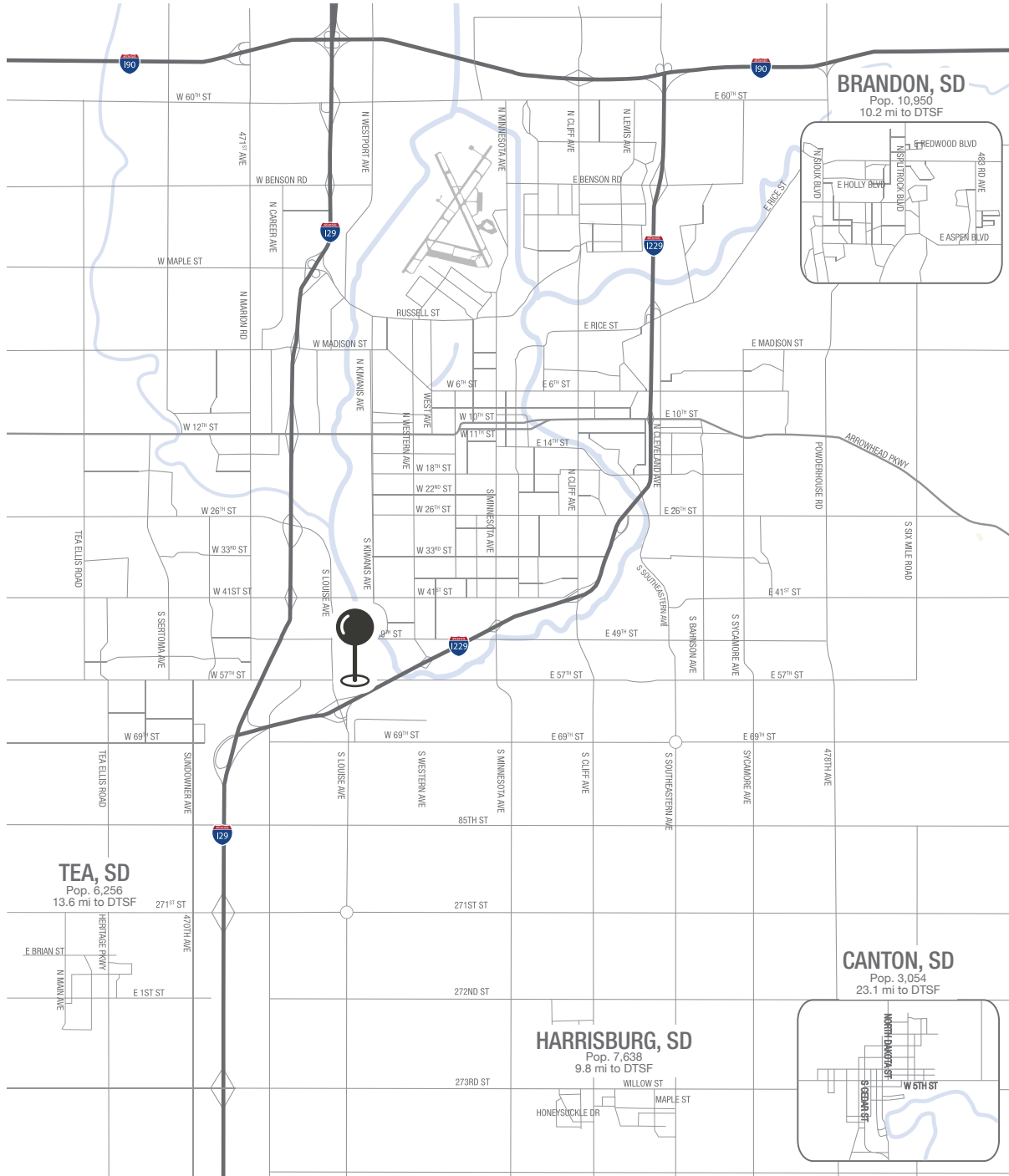


# OAKBROOK II SUITE 230

OFFICE SPACE FOR LEASE



## MSA MAP



**RAQUEL BLOUNT, SIOR** 605.728.9092 | [raquel@lloydcompanies.com](mailto:raquel@lloydcompanies.com)



# OAKBROOK II SUITE 230

OFFICE SPACE FOR LEASE



## SIoux FALLS DEMOGRAPHICS

### POPULATION PROJECTION

Year	Sioux Falls	MSA
2023	213,891	304,555
2028	219,756	312,586

Sioux Falls, South Dakota's largest city, is one of the fastest growing areas in the nation with population growth rate nearly four times the national average. It serves as the largest retail hub between Denver and the Twin Cities and offers residents & visitors an ample selection of commodities and services. Being located in the heart of the Midwest, Sioux Falls draws shoppers from a four-state area.

Sioux Falls has low business costs with a high quality of life. There's no state, corporate or personal income tax, no inheritance tax and no limits to what your business can achieve.

### FAST FACTS



#2 Best Tax Climate in the U.S.  
*(Tax Foundation 2024)*



Best City for Young Professionals  
*(SmartAsset 2023)*

2.1%

Minnehaha Unemployment Rate  
*(January 2024)*



#3 Hottest Job Market  
*(ZipRecruiter 2023)*

1.19M

# of Visitors to Sioux Falls in 2022



Third City in Economic Strength  
*(Policom 2023)*



No Corporate Income Tax



Top Eight Happiest Cities in America  
*(WalletHub 2023)*

### TOP EMPLOYERS



10,750



8,298



3,688



3,600



2,939



2,505

Lloyd Companies Commercial Real Estate | 150 E. 4th Place Suite 600, Sioux Falls, SD 57104 | 605.323.2820

Property details contained herein are intended for general informational purposes only. Lloyd Real Estate, LLC has not independently verified any of the information that it has been provided and makes no representation or warranty of any kind as to its accuracy or completeness. Use this information at your own discretion, and always consult with qualified professionals or experts in the relevant field for specific guidance. Nothing contained herein shall be deemed to constitute legal, financial, or professional advice.