



CREEKSIDE RETAIL II

RETAIL SUITE FOR LEASE



251 N Cliff Avenue,
Harrisburg, SD 57032



1,020 SF +/-



\$15.50 / SF NNN
Estimated NNN: \$7.31 / SF
TIA: \$40 / SF

LOCATION

Positioned just north of the Willow Street and Cliff Avenue intersection, along Cliff Avenue, in Harrisburg, South Dakota. Harrisburg serves as a suburb of Sioux Falls, located in Lincoln County, which is the fastest growing county in South Dakota at a rate of 12.4%. Harrisburg offers great schools, dining and shopping options with easy access to all of the great amenities Sioux Falls offers.

DESCRIPTION

- Suite is in shell condition ready for tenant build-outs
- Creekside Retail II is part of an on-going development, Creekside Place, which will include 229 single family homes, 37 villas, 47 townhomes, 3 strip malls, and two stand-alone restaurants.
- ~80 shared parking spaces on-site
- Building and monument signage available
- Co-tenants include 1888 Hair + Co, Premiere Builders Inc, Domino's, a casino, and a dog groomer
- Area neighbors include B&G Milkyway, Fareway, Ace Hardware, Lewis Drug, Hy-Vee, Dollar General, and a proposed Scooters

ALEXIS MAHLEN | 605.321.4861 | alexis@lloydcompanies.com

RAQUEL BLOUNT sior | 605.728.9092 | raquel@lloydcompanies.com

BUILDING COSTS

*These numbers are based on estimates and are not guaranteed.

Space	Size	Base Rent	NNN Est.	Total (Base + NNN) Est.	Yearly Total Est.	Monthly Total Est.	TIA
Suite 5	1,020 SF	\$15.50/SF NNN	\$7.31/SF	\$22.81/SF	\$23,266.20	\$1,938.85	\$40/SF

2024 ESTIMATED NNN INFORMATION

NNN	Paid By:	Cost (\$/SF)
Real Estate Taxes	Paid by LL, Reimbursed by Tenant	\$3.17*
Property Insurance	Paid by LL, Reimbursed by Tenant	\$0.43*
Common Area Maintenance	Paid by LL, Reimbursed by Tenant	\$3.71*
Total	-	\$7.31
CAM includes the following utilities: Water & Sewer, and Trash		

UTILITY INFORMATION

Utility	Paid By	Provider	Part of CAM	Separately Metered
Gas	Paid by Tenant directly to Provider	Mid-American Energy	No	Yes
Electricity	Paid by Tenant directly to Provider	Xcel Energy	No	Yes
Water & Sewer	Paid by Tenant through CAM	City of Sioux Falls	Yes	No
Trash	Paid by Tenant directly to Provider	Novak	No	N/A
Phone/Cable/Internet	Paid by Tenant directly to Provider	Tenant can select their preferred provider	No	N/A

ALEXIS MAHLEN 605.321.4861 | alexis@lloydcompanies.com
RAQUEL BLOUNT, SIOR 605.728.9092 | raquel@lloydcompanies.com

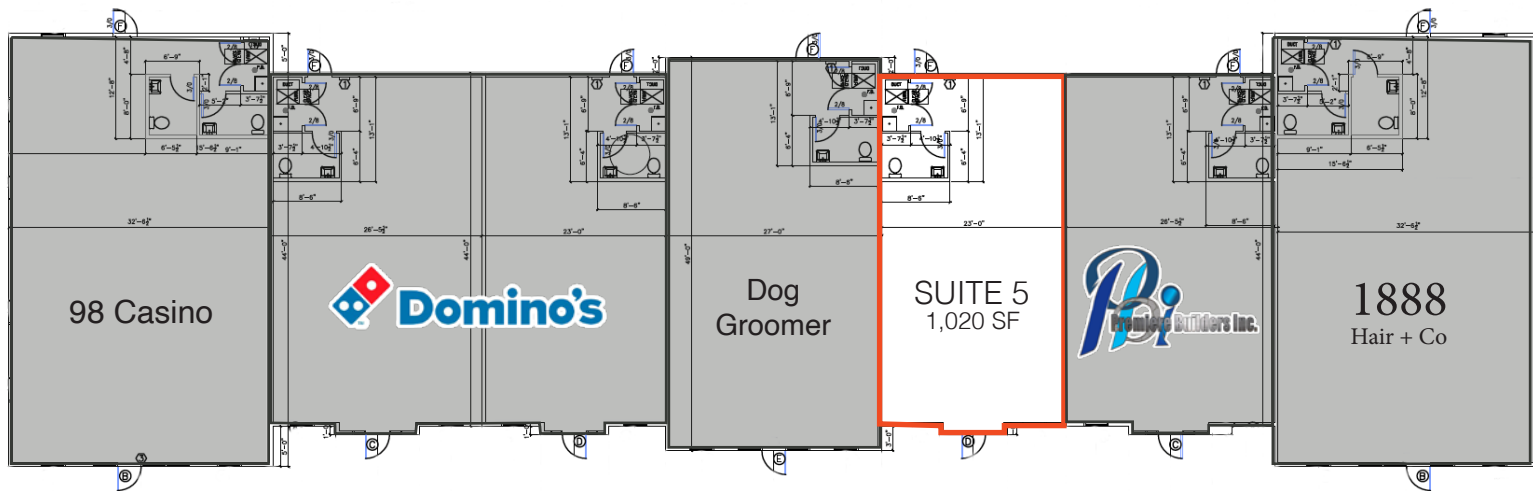
CREEKSIDE RETAIL II

RETAIL SUITE FOR LEASE



FLOOR PLAN

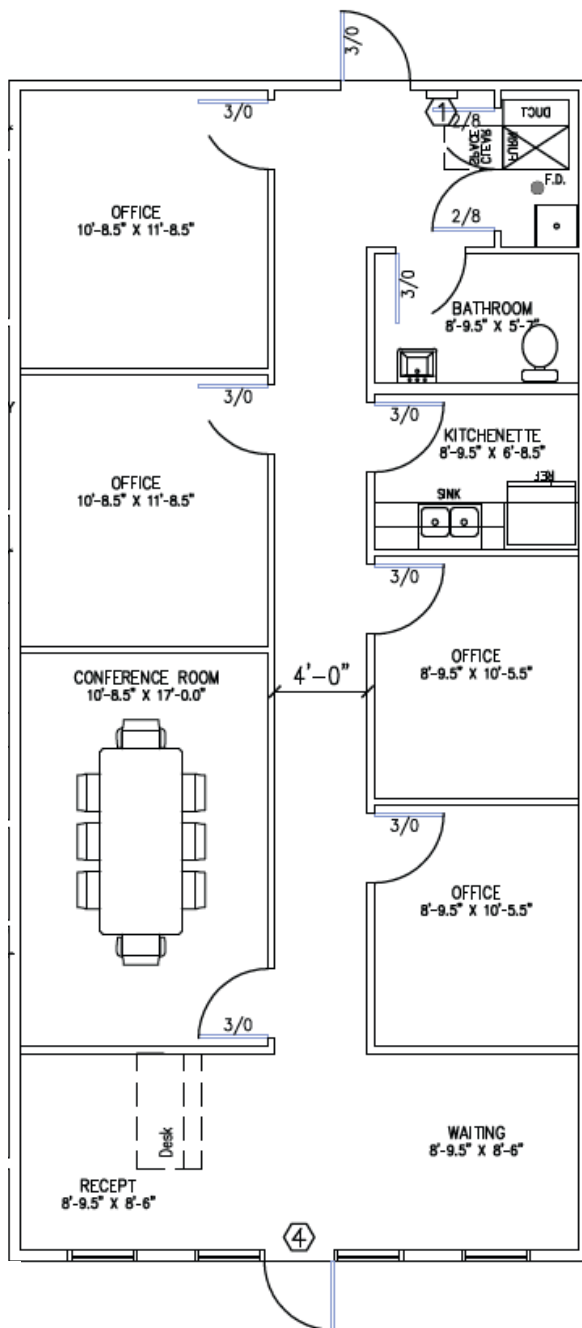
Concept only; subject to change



ALEXIS MAHLEN 605.321.4861 | alexis@lloydcompanies.com
RAQUEL BLOUNT, SIOR 605.728.9092 | raquel@lloydcompanies.com

POTENTIAL BUILD-OUT

Concept only; subject to change



ALEXIS MAHLEN 605.321.4861 | alexis@lloydcompanies.com
RAQUEL BLOUNT, SIOR 605.728.9092 | raquel@lloydcompanies.com

CREEKSIDE RETAIL II

RETAIL SUITE FOR LEASE



PHOTOS



ALEXIS MAHLEN 605.321.4861 | alexis@lloydcompanies.com
RAQUEL BLOUNT, SIOR 605.728.9092 | raquel@lloydcompanies.com

CREEKSIDE RETAIL II

RETAIL SUITE FOR LEASE



DRONE PHOTOS



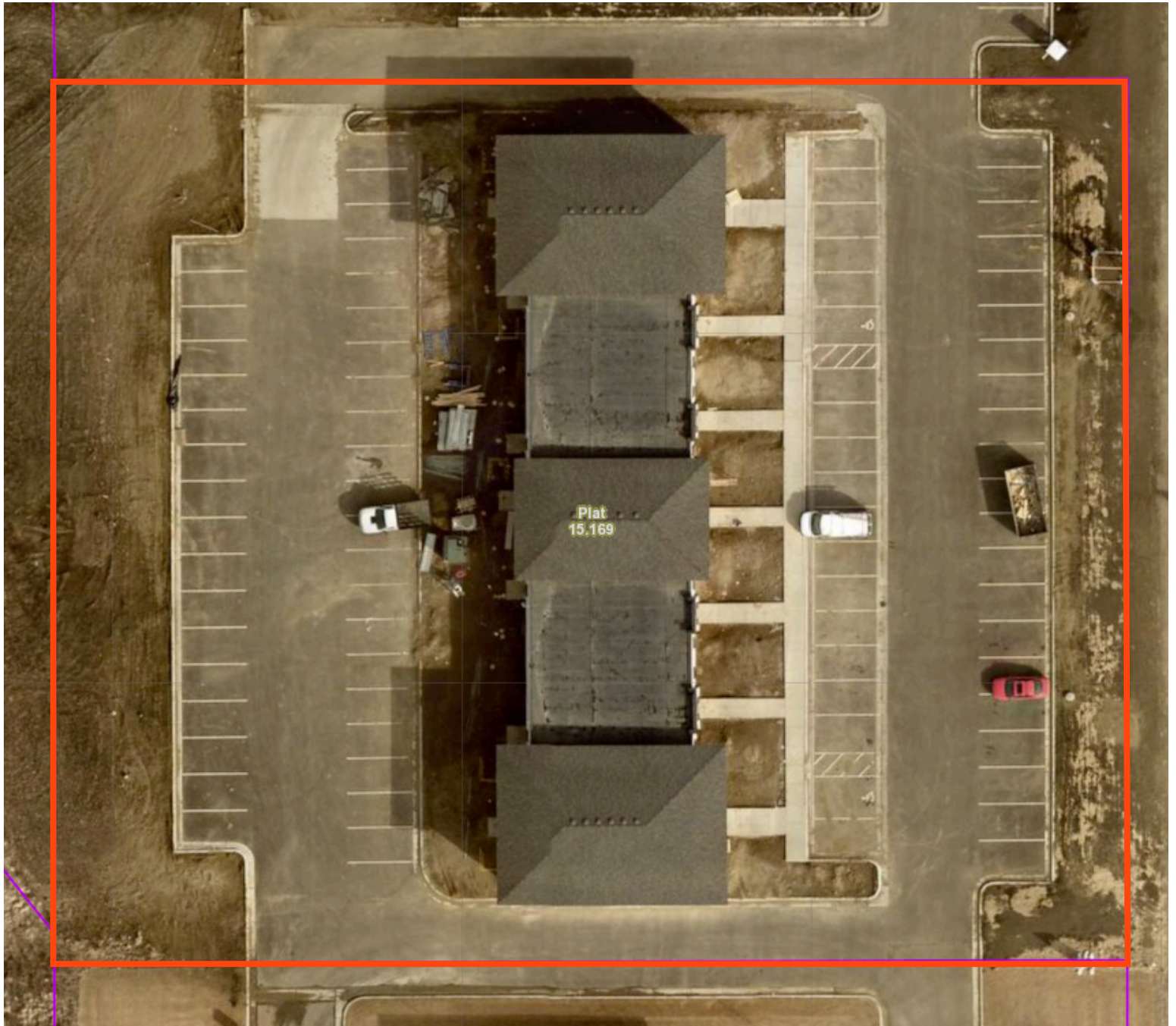
ALEXIS MAHLEN 605.321.4861 | alexis@lloydcompanies.com
RAQUEL BLOUNT, SIOR 605.728.9092 | raquel@lloydcompanies.com

CREEKSIDE RETAIL II

RETAIL SUITE FOR LEASE



AERIAL VIEW



ALEXIS MAHLEN 605.321.4861 | alexis@lloydcompanies.com
RAQUEL BLOUNT, SIOR 605.728.9092 | raquel@lloydcompanies.com

CREEKSIDE RETAIL II

RETAIL SUITE FOR LEASE



AREA MAP



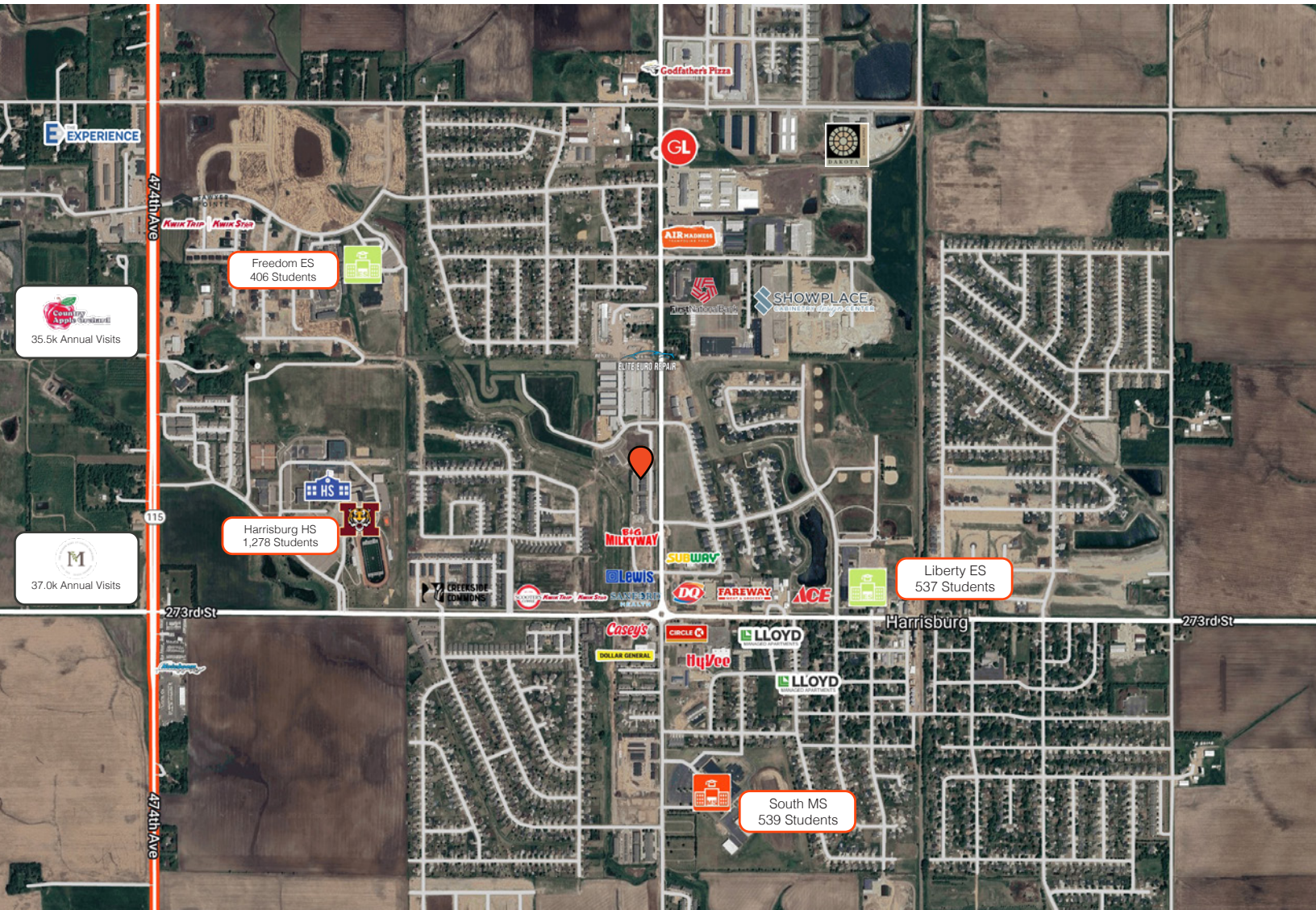
ALEXIS MAHLEN 605.321.4861 | alexis@lloydcompanies.com
RAQUEL BLOUNT, SIOR 605.728.9092 | raquel@lloydcompanies.com

CREEKSIDE RETAIL II

RETAIL SUITE FOR LEASE



HARRISBURG MAP



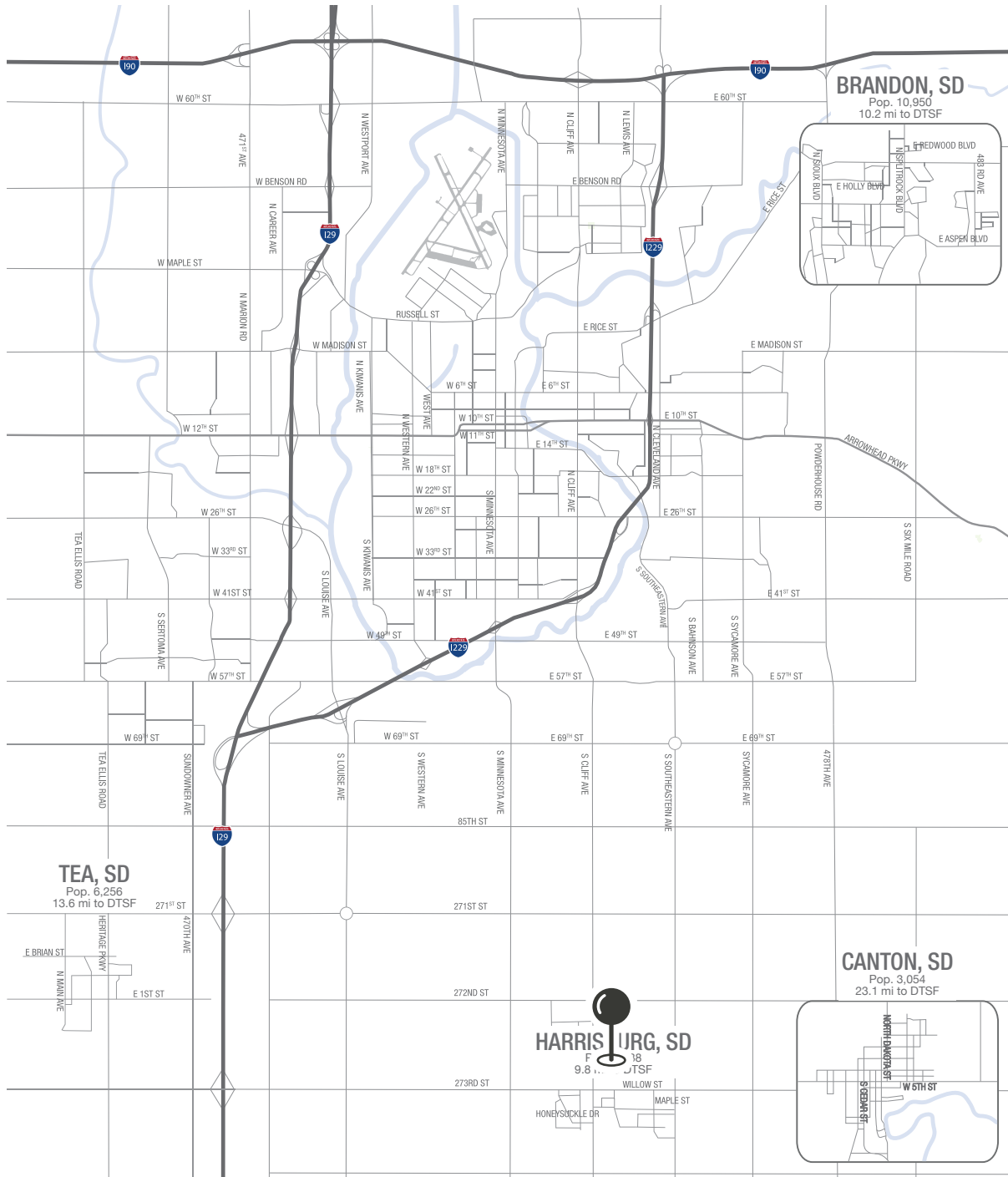
ALEXIS MAHLEN 605.321.4861 | alexis@lloydcompanies.com
RAQUEL BLOUNT, SIOR 605.728.9092 | raquel@lloydcompanies.com

CREEKSIDE RETAIL II

RETAIL SUITE FOR LEASE



MSA MAP



ALEXIS MAHLEN 605.321.4861 | alexis@lloydcompanies.com
RAQUEL BLOUNT, SIOR 605.728.9092 | raquel@lloydcompanies.com

MARKET PROFILE

	1 mile	3 miles	5 miles
Population Summary			
2010 Total Population	4,036	4,877	21,438
2020 Total Population	6,177	7,728	36,883
2020 Group Quarters	0	0	111
2023 Total Population	6,825	8,517	41,793
2023 Group Quarters	0	0	112
2028 Total Population	7,422	9,264	46,888
2023-2028 Annual Rate	1.69%	1.70%	2.33%
2023 Total Daytime Population	4,694	5,684	28,692
Workers	1,568	1,814	8,641
Residents	3,126	3,870	20,051
Household Summary			
2010 Households	1,413	1,690	7,792
2010 Average Household Size	2.86	2.89	2.75
2020 Total Households	2,108	2,596	14,047
2020 Average Household Size	2.93	2.98	2.62
2023 Households	2,336	2,862	16,114
2023 Average Household Size	2.92	2.98	2.59
2028 Households	2,539	3,110	18,206
2028 Average Household Size	2.92	2.98	2.57
2023-2028 Annual Rate	1.68%	1.68%	2.47%
2010 Families	1,135	1,364	5,990
2010 Average Family Size	3.15	3.18	3.14
2023 Families	1,840	2,266	11,800
2023 Average Family Size	3.27	3.33	3.04
2028 Families	1,993	2,455	13,245
2028 Average Family Size	3.28	3.33	3.03
2023-2028 Annual Rate	1.61%	1.62%	2.34%
Median Household Income			
2023	\$82,377	\$83,771	\$94,083
2028	\$88,946	\$90,668	\$105,032
Median Age			
2010	27.6	27.7	33.2
2020	29.6	29.8	35.1
2023	30.8	31.2	35.9
2028	31.6	32.2	36.6
2023 Population by Sex			
Males	3,285	4,119	20,445
Females	3,540	4,398	21,348
2028 Population by Sex			
Males	3,563	4,471	22,895
Females	3,859	4,793	23,993
Data for all businesses in area			
	1 mile	3 miles	5 miles
Total Businesses:	97	151	1,025
Total Employees:	1,121	1,901	9,196

ALEXIS MAHLEN 605.321.4861 | alexis@lloydcompanies.com
RAQUEL BLOUNT, SIOR 605.728.9092 | raquel@lloydcompanies.com

Lloyd Companies Commercial Real Estate | 150 E. 4th Place Suite 600, Sioux Falls, SD 57104 | 605.323.2820

Property details contained herein are intended for general informational purposes only. Lloyd Real Estate, LLC has not independently verified any of the information that it has been provided and makes no representation or warranty of any kind as to its accuracy or completeness. Use this information at your own discretion, and always consult with qualified professionals or experts in the relevant field for specific guidance. Nothing contained herein shall be deemed to constitute legal, financial, or professional advice.