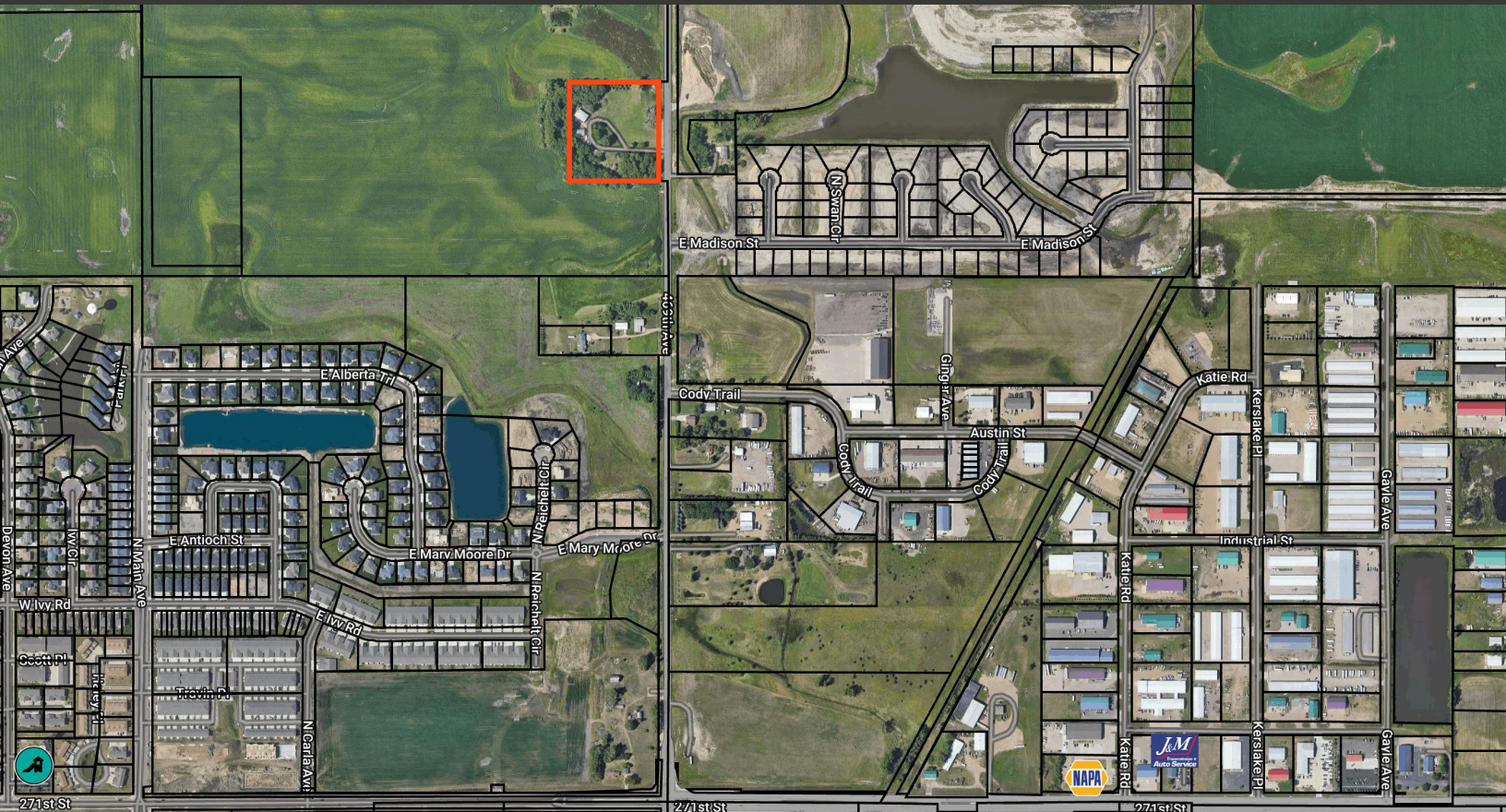


TEA-ELLIS ACREAGE

FOR SALE



27037 469th Avenue
Tea, SD 57064



5.2 Acres +/-
226,512 SF +/-



\$ 6.00 / SF
\$1,359,072

LOCATION

Located just north of Tea, SD on the Tea-Ellis Road. With a growing population of 6,539, the town of Tea is a suburb of Sioux Falls providing frequent traffic from residents. Tea-Ellis Road is a north/south corridor between Tea and Sioux Falls. Tea-Ellis Road is slated for future improvement and widening. Land needed for widening has already been conveyed to the County.

DESCRIPTION

- The land is located across the street from a beautiful new residential development
- Currently zoned A-1 Agricultural - buyer could rezone
- Two current out buildings on parcel
- A half-mile north of the 271st and Heritage Parkway intersection
- Perfect site for multi-family or commercial development
- Neighborhood tenants include: GrandStay Hotel & Suites, Zooks Coffee Bar, Climberz, Scooter's Coffee, Lauriebells, Squealer's Smoke Shack, and more.
- Contact Broker for more information

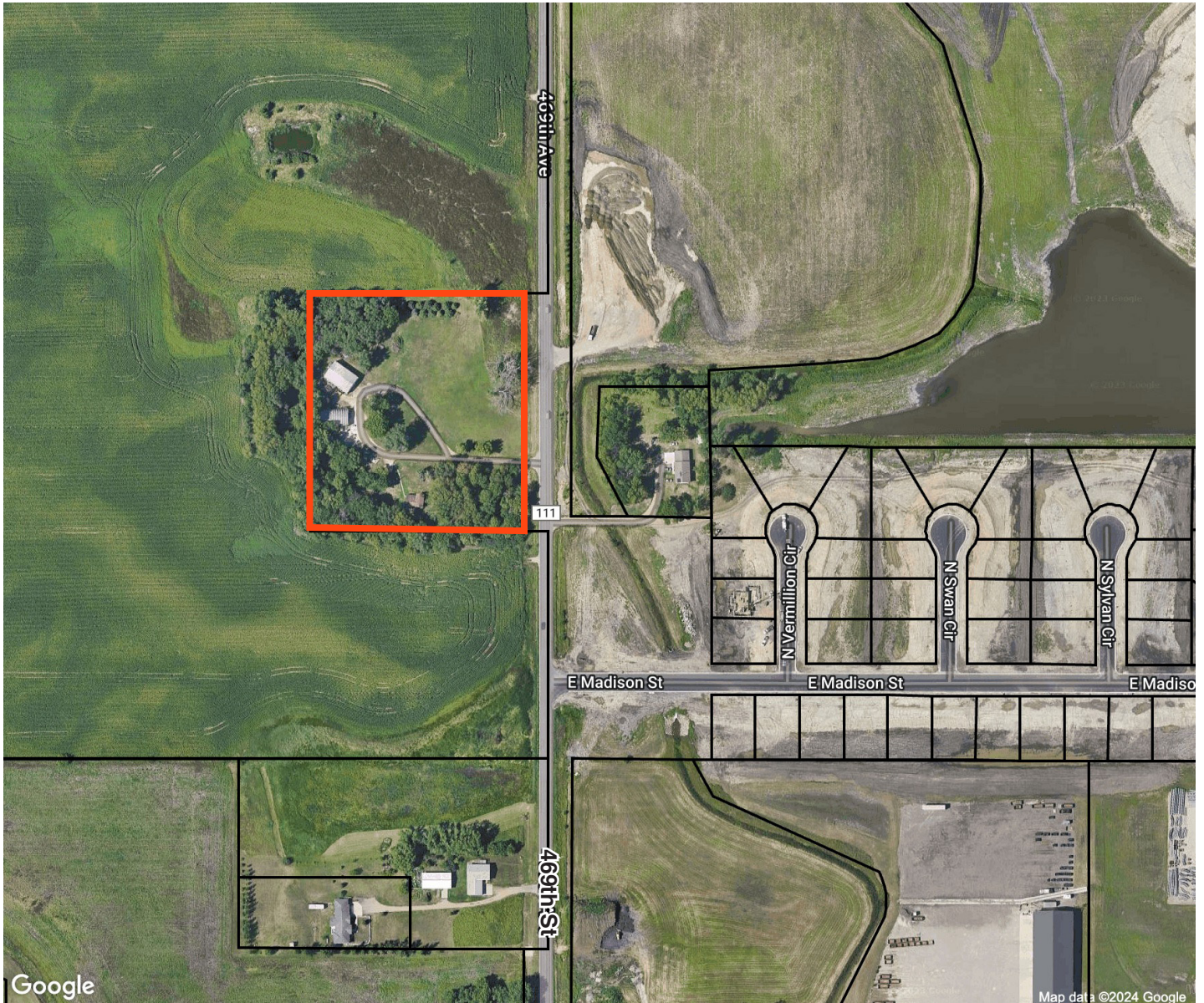
SCOTT BLOUNT

605.231.1882 | scott@lloydcompanies.com

150 E. 4th Place Suite 600, Sioux Falls, SD 57104 | 605.323.2820

Find out more at LloydCompanies.com | Information deemed reliable, but not guaranteed.

SITE MAP



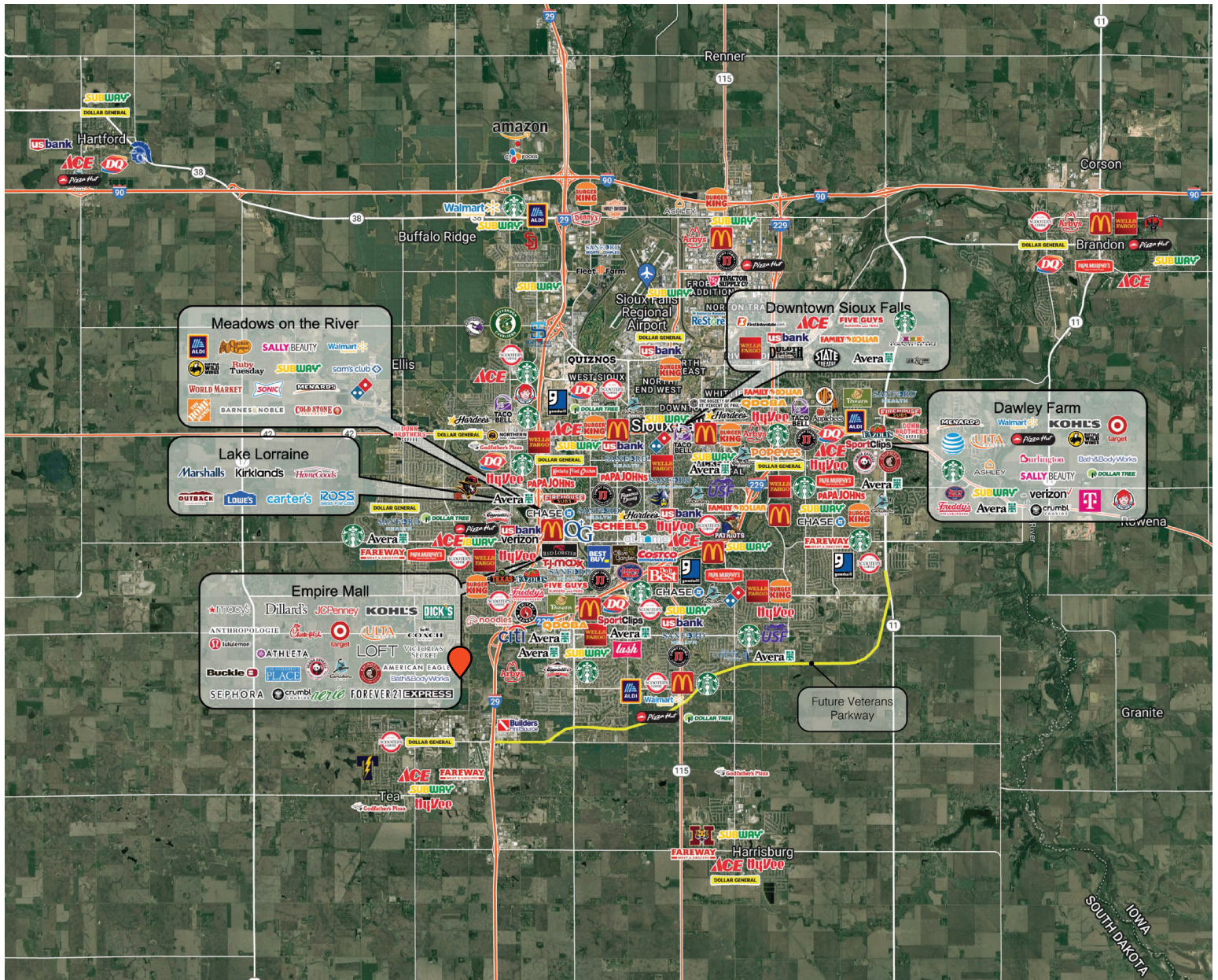
SCOTT BLOUNT 605.231.1882 | scott@lloydcompanies.com

CROSSBAR COMPLEX LAND

FOR SALE



CITY MAP



SCOTT BLOUNT 605.231.1882 | scott@lloydcompanies.com

150 E. 4th Place Suite 600, Sioux Falls, SD 57104 | 605.323.2820

Find out more at LloydCompanies.com | Information deemed reliable, but not guaranteed.