



E 57th Street & S Bahnson Ave
Sioux Falls, SD 57108



1.72 Acres +/-



\$12.00 / SF

LOCATION

Near the crossroads of Highway 11 and future Veterans Parkway in Sioux Falls fastest growing area. This office lot will serve the expanding communities of Sioux Falls, Harrisburg, and Brandon.

DESCRIPTION

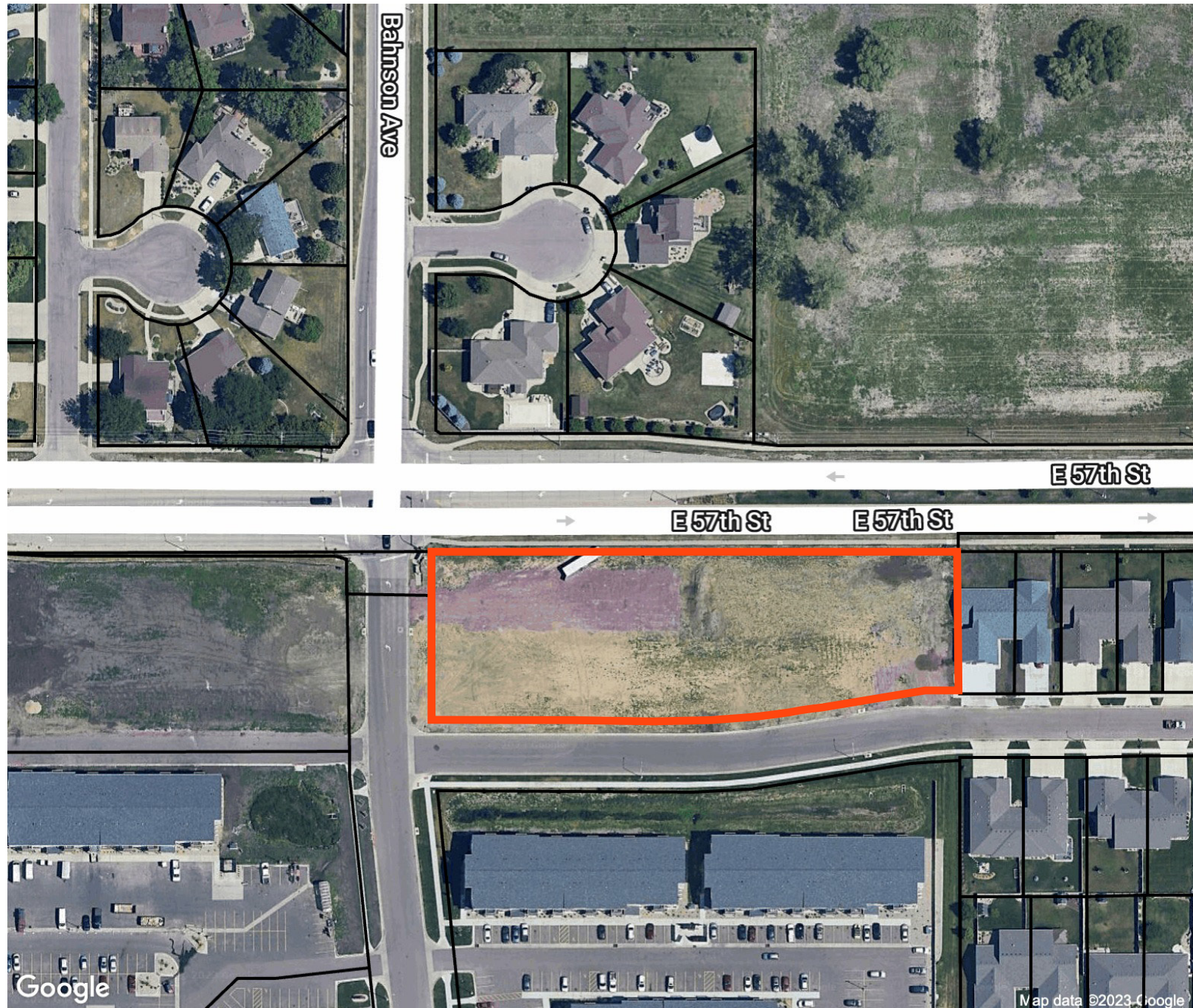
- Zoning: Live/Work (Office)
- Close proximity to major highways and transportation routes making it convenient for commuting and logistics
- Nearby amenities such as schools, parks, shopping centers, and healthcare facilities
- Traffic counts of 25,800 VPD on 57th street & S Southeastern Ave
- Contact Broker for additional information
- Near Sioux Falls Christian School, Horizon Elementary School, Greatlife, Barrel House, Hy-Vee, Starbucks, Walgreens, and University of Sioux Falls Sports Complex
- Located near Harmodon Park Baseball / Softball Complex, which receives over 300,000 visitors annually with 7 baseball diamonds and 8 softball fields

RAQUEL BLOUNT SIOR

605.728.9092 | raquel@lloydcompanies.com

SITE OUTLINE

Concept only; subject to change



RAQUEL BLOUNT, SIOR 605.728.9092 | raquel@lloydcompanies.com

101 S. Reid Street Ste. 201, Sioux Falls, SD 57103 | 605.323.2820

Find out more at LloydCompanies.com | Information deemed reliable, but not guaranteed.

ROWE LAND

LAND FOR SALE

LLOYD

AERIAL



RAQUEL BLOUNT, SIOR 605.728.9092 | raquel@lloydcompanies.com

101 S. Reid Street Ste. 201, Sioux Falls, SD 57103 | 605.323.2820

Find out more at LloydCompanies.com | Information deemed reliable, but not guaranteed.

ROWE LAND

LAND FOR SALE



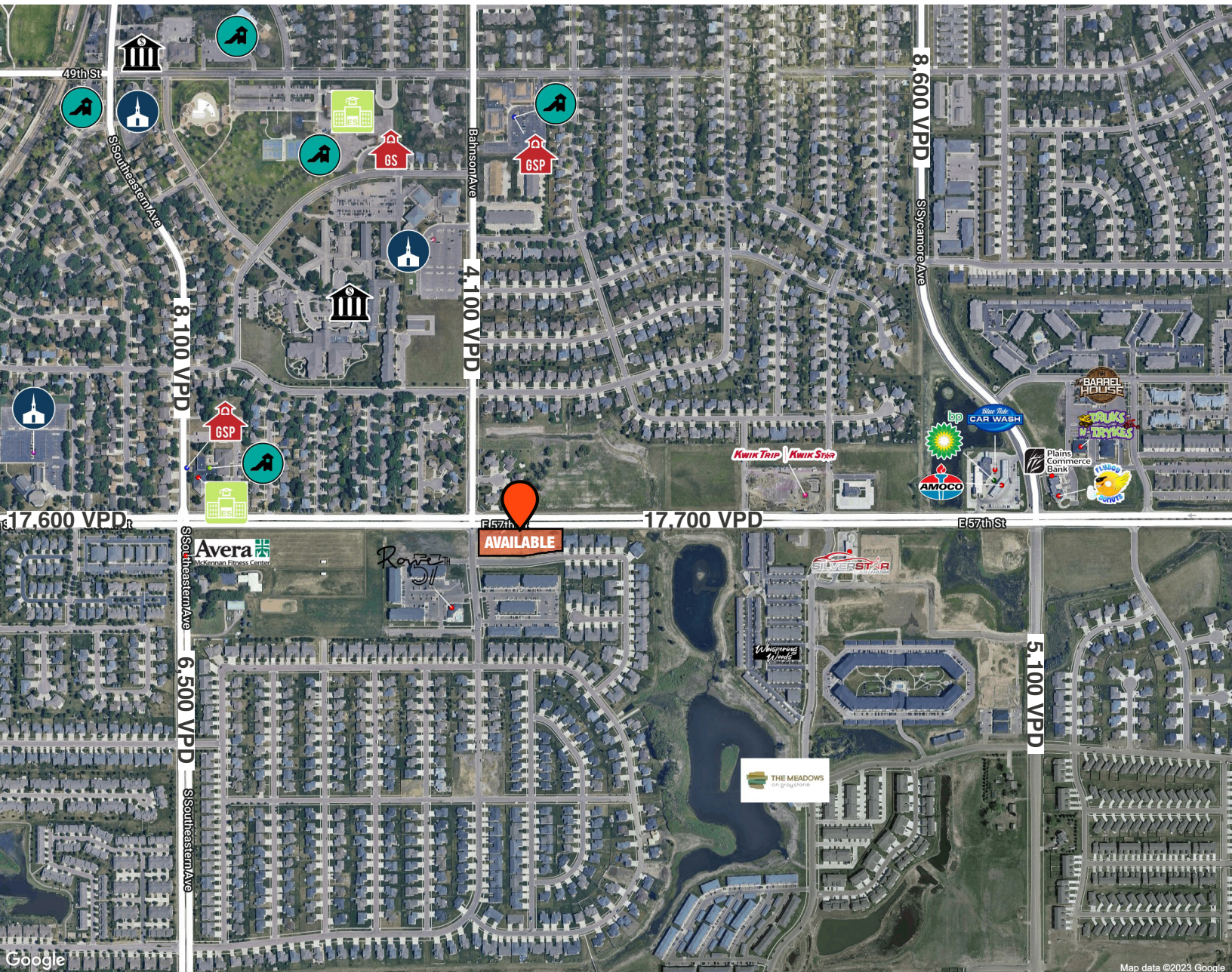
AERIAL



RAQUEL BLOUNT, SIOR 605.728.9092 | raquel@lloydcompanies.com

101 S. Reid Street Ste. 201, Sioux Falls, SD 57103 | 605.323.2820
Find out more at LloydCompanies.com | Information deemed reliable, but not guaranteed.

SITE MAP

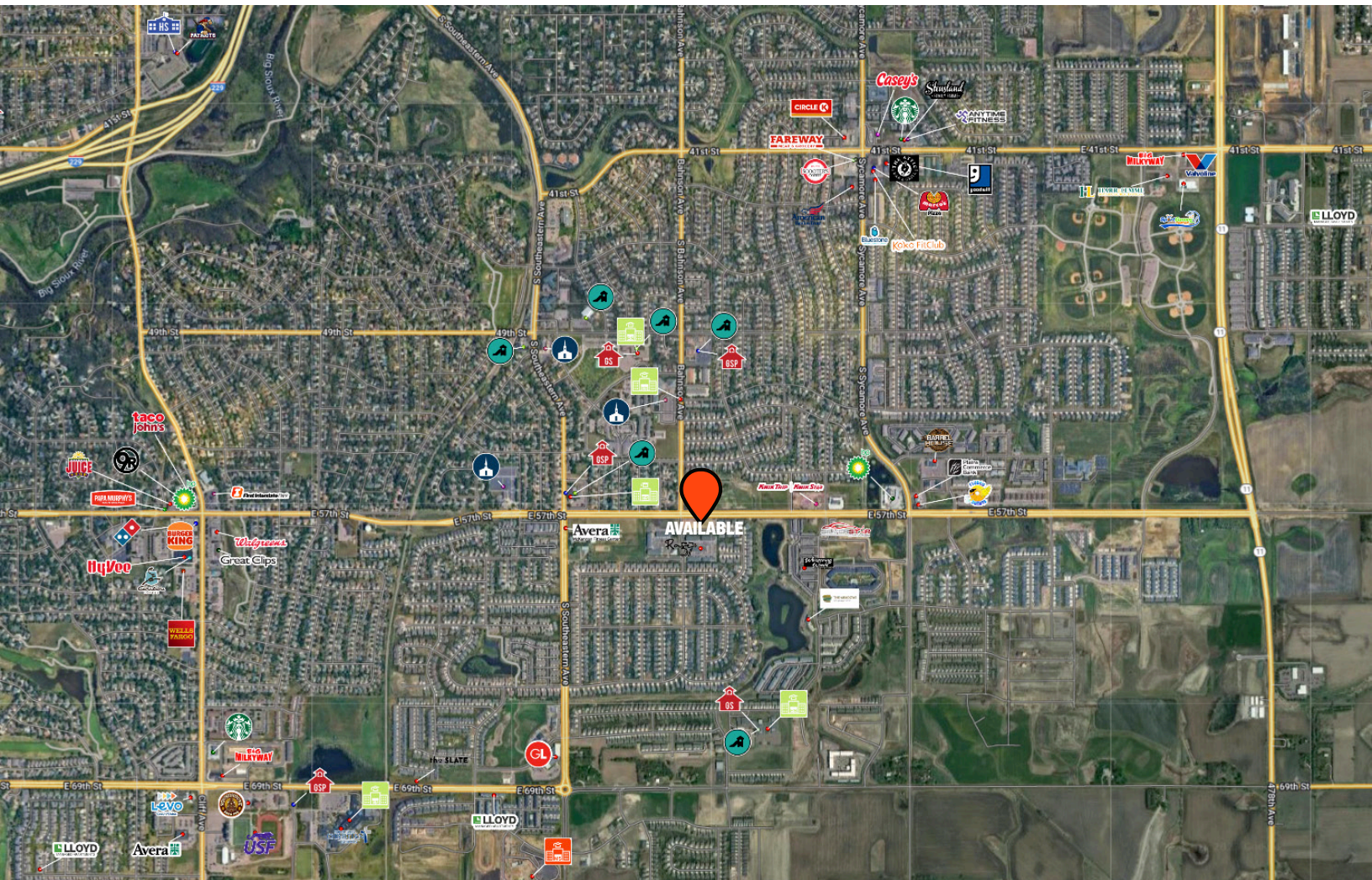


RAQUEL BLOUNT, SIOR 605.728.9092 | raquel@lloydcompanies.com

101 S. Reid Street Ste. 201, Sioux Falls, SD 57103 | 605.323.2820

Find out more at LloydCompanies.com | Information deemed reliable, but not guaranteed.

AREA MAP

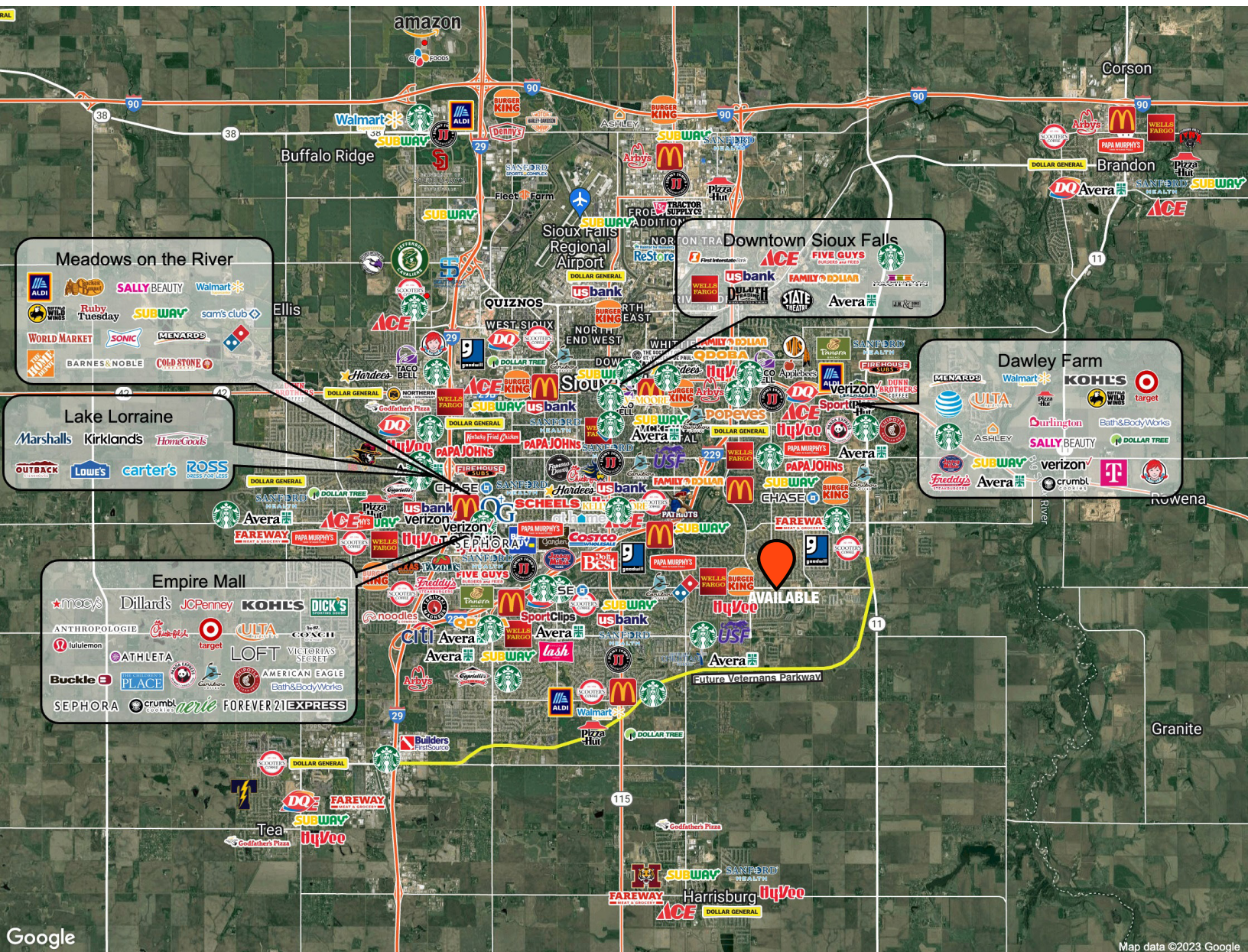


RAQUEL BLOUNT, SIOR 605.728.9092 | raquel@lloydcompanies.com

101 S. Reid Street Ste. 201, Sioux Falls, SD 57103 | 605.323.2820

Find out more at LloydCompanies.com | Information deemed reliable, but not guaranteed.

SIOUX FALLS MAP



RAQUEL BLOUNT, SIOR 605.728.9092 | raquel@lloydcompanies.com

101 S. Reid Street Ste. 201, Sioux Falls, SD 57103 | 605.323.2820

Find out more at LloydCompanies.com | Information deemed reliable, but not guaranteed.