



BAKKER LANDING STRIP MALL II

RETAIL SPACE FOR LEASE



TBD Venture Place
Tea, SD 57064



1,335 - 7,003 SF +/-



Endcap: \$30.00 / SF NNN
In-line: \$25.00 / SF NNN
Est NNN: \$6.25 / SF
TIA: \$35.00 / SF

LOCATION

Located just off 271st St in Tea, South Dakota, near the 271st & I-29 intersection. The future Veterans Parkway begins at this intersection, which will connect I-29 and I-90, mirroring I-229 to provide additional accessibility around the MSA.

DESCRIPTION

- Bakker Crossing is a 270-acre development in Tea, SD that started in 2018 with the intention of providing a connection between the Tea suburb and Sioux Falls
- Built to the right of Bakker Strip Mall I, which includes Starbucks, Down Home by DeBoers, and Dakota Players Club
- Area neighbors include Casey's, Sherwin Williams, Car Swap, Glass Doctor, Thornton Carpet, Orthopedic Institute, Sioux Falls Specialty Hospital, and more
- Prime visibility with traffic counts of 38,760 VPD on I-29, and 15,295 VPD along 271st Street
- ~246 businesses and 1,977 employees within a 1-mile radius

Professionally managed by:



Envision More
www.cresten.com

RAQUEL BLOUNT SIOR

605.728.9092 | raquel@lloydcompanies.com

BAKKER LANDING STRIP MALL II

RETAIL SPACE FOR LEASE



BUILDING COSTS

*These numbers are based on estimates and are not guaranteed.

Space	Size	Base Rent	NNN Est.	Total (Base + NNN) Est.	Yearly Total Est.	Monthly Total Est.	TIA
B	1,335 SF	\$25.00/SF NNN	\$6.25/SF	\$31.25/SF	\$41,718.75	\$3,476.56	\$35.00/SF
C	1,379 SF	\$25.00/SF NNN	\$6.25/SF	\$31.25/SF	\$43,093.75	\$3,591.15	\$35.00/SF
D	1,379 SF	\$25.00/SF NNN	\$6.25/SF	\$31.25/SF	\$43,093.75	\$3,591.15	\$35.00/SF
E	1,379 SF	\$25.00/SF NNN	\$6.25/SF	\$31.25/SF	\$43,093.75	\$3,591.15	\$35.00/SF
F	1,531 SF	\$30.00/SF NNN	\$6.25/SF	\$36.25/SF	\$55,498.75	\$4,624.90	\$35.00/SF

RAQUEL BLOUNT, SIOR 605.728.9092 | raquel@lloydcompanies.com

BAKKER LANDING STRIP MALL II

RETAIL SPACE FOR LEASE



FLOOR PLAN

Concept only; subject to change



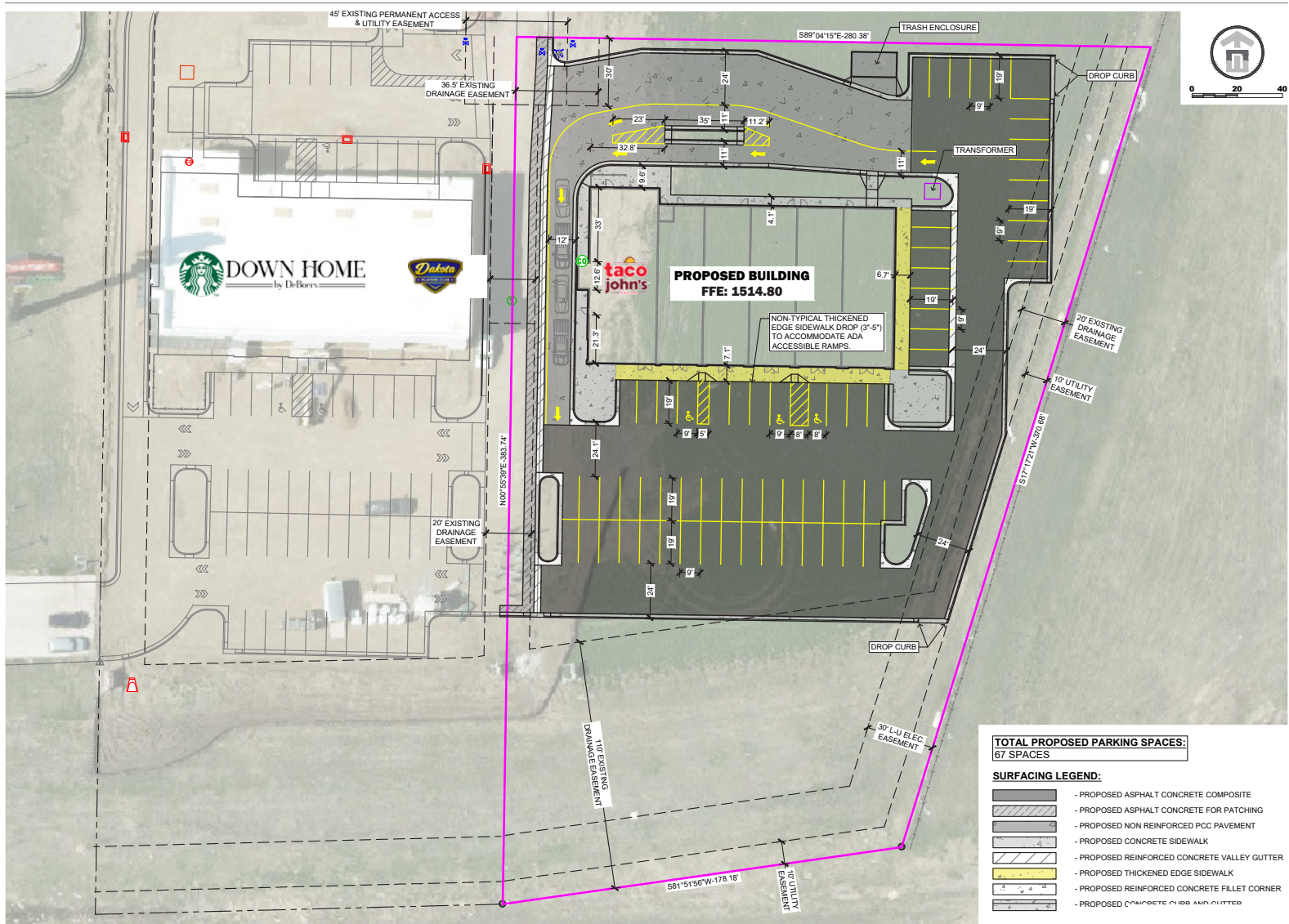
RAQUEL BLOUNT, SIOR | 605.728.9092 | raquel@lloydcompanies.com

Lloyd Companies Commercial Real Estate | 150 E. 4th Place Suite 600, Sioux Falls, SD 57104 | 605.323.2820

Find out more at LloydCompanies.com | Information deemed reliable, but not guaranteed.

SITE PLAN

Concept only; subject to change



RAQUEL BLOUNT, SIOR 605.728.9092 | raquel@lloydcompanies.com

BAKKER LANDING STRIP MALL II

RETAIL SPACE FOR LEASE



RENDERING



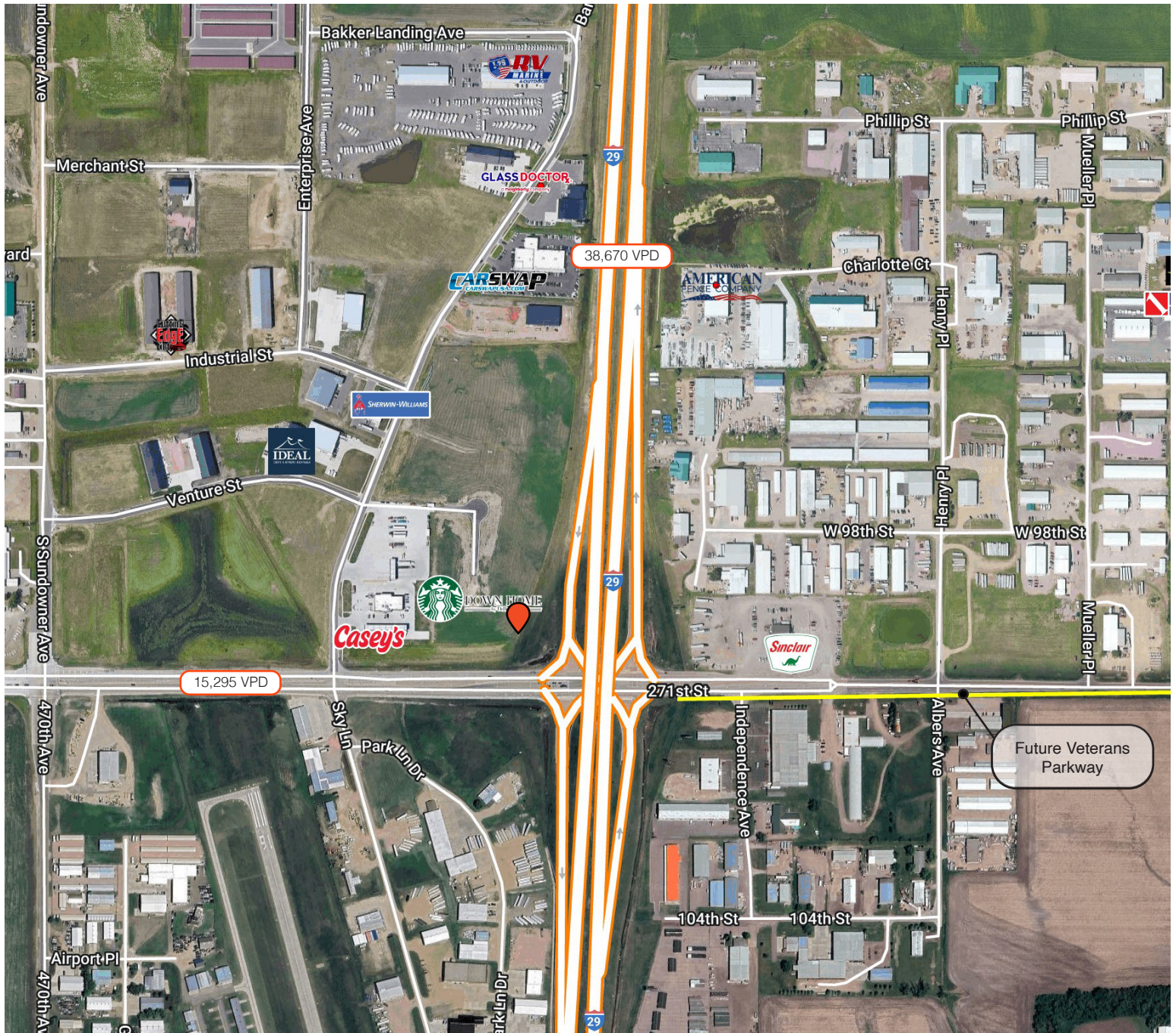
RAQUEL BLOUNT, SIOR 605.728.9092 | raquel@lloydcompanies.com

BAKKER LANDING STRIP MALL II



RETAIL SPACE FOR LEASE

SITE MAP



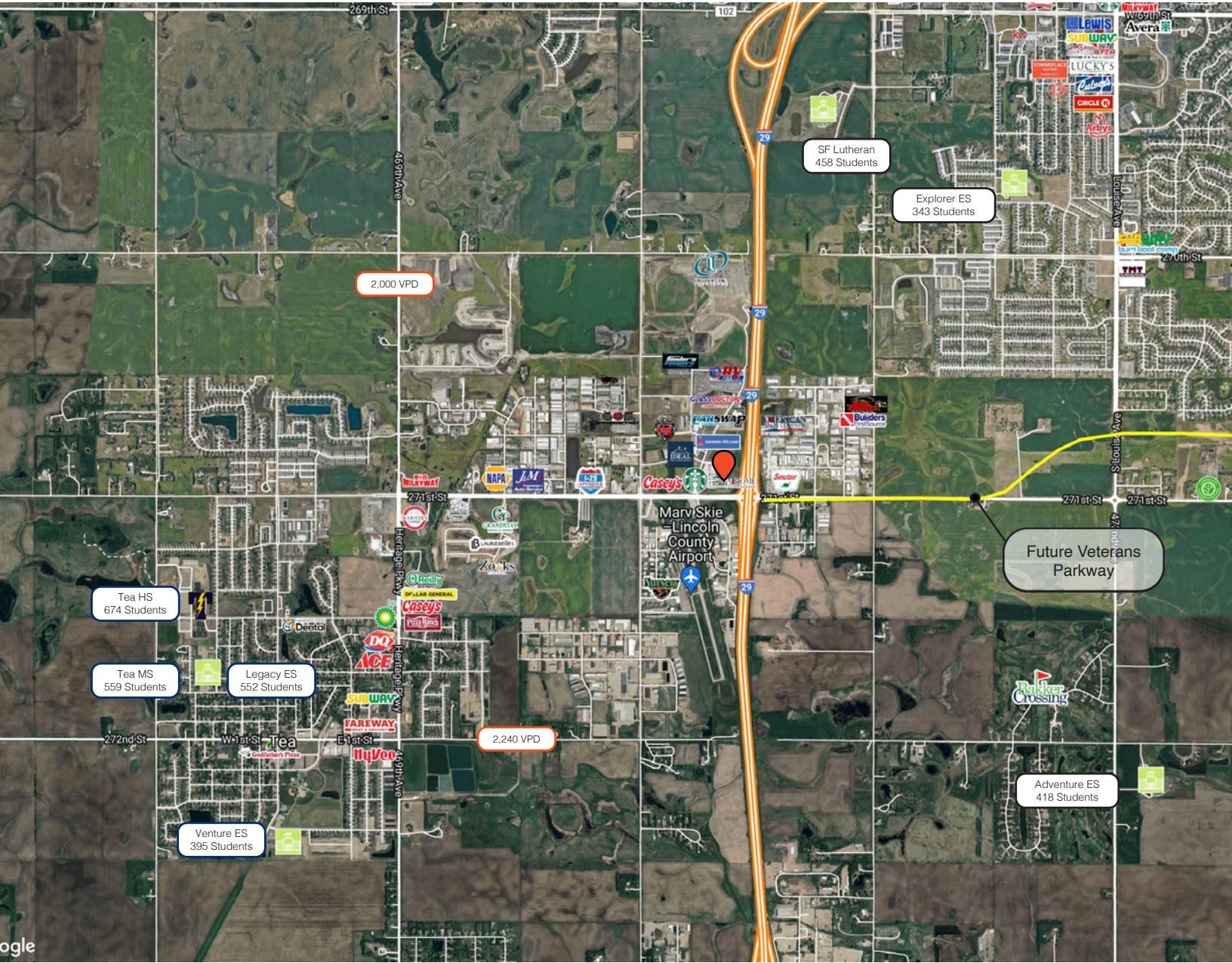
RAQUEL BLOUNT, SIOR 605.728.9092 | raquel@lloydcompanies.com

BAKKER LANDING STRIP MALL II

RETAIL SPACE FOR LEASE



NEIGHBORHOOD MAP



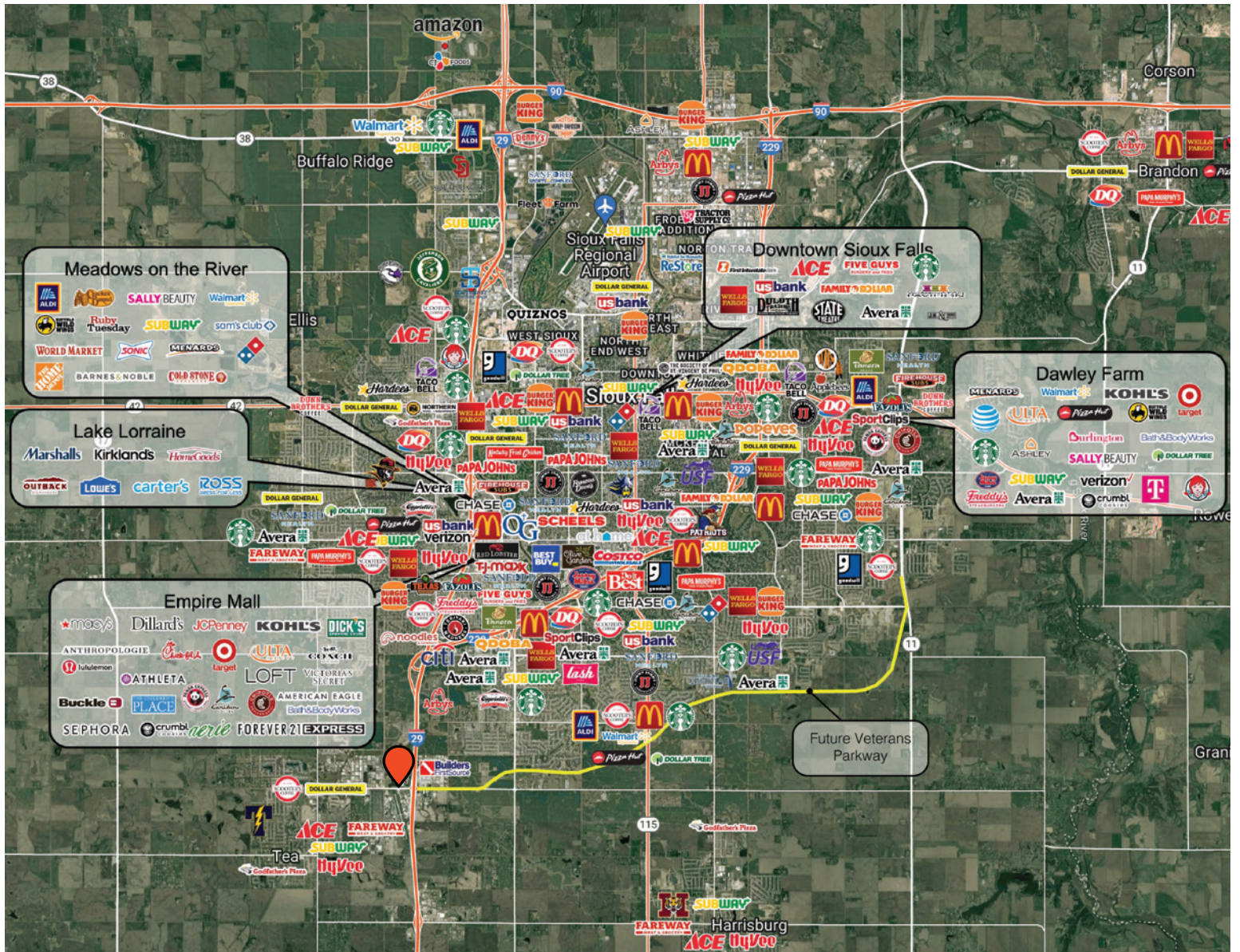
RAQUEL BLOUNT, SIOR 605.728.9092 | raquel@lloydcompanies.com

BAKKER LANDING STRIP MALL II



RETAIL SPACE FOR LEASE

CITY MAP



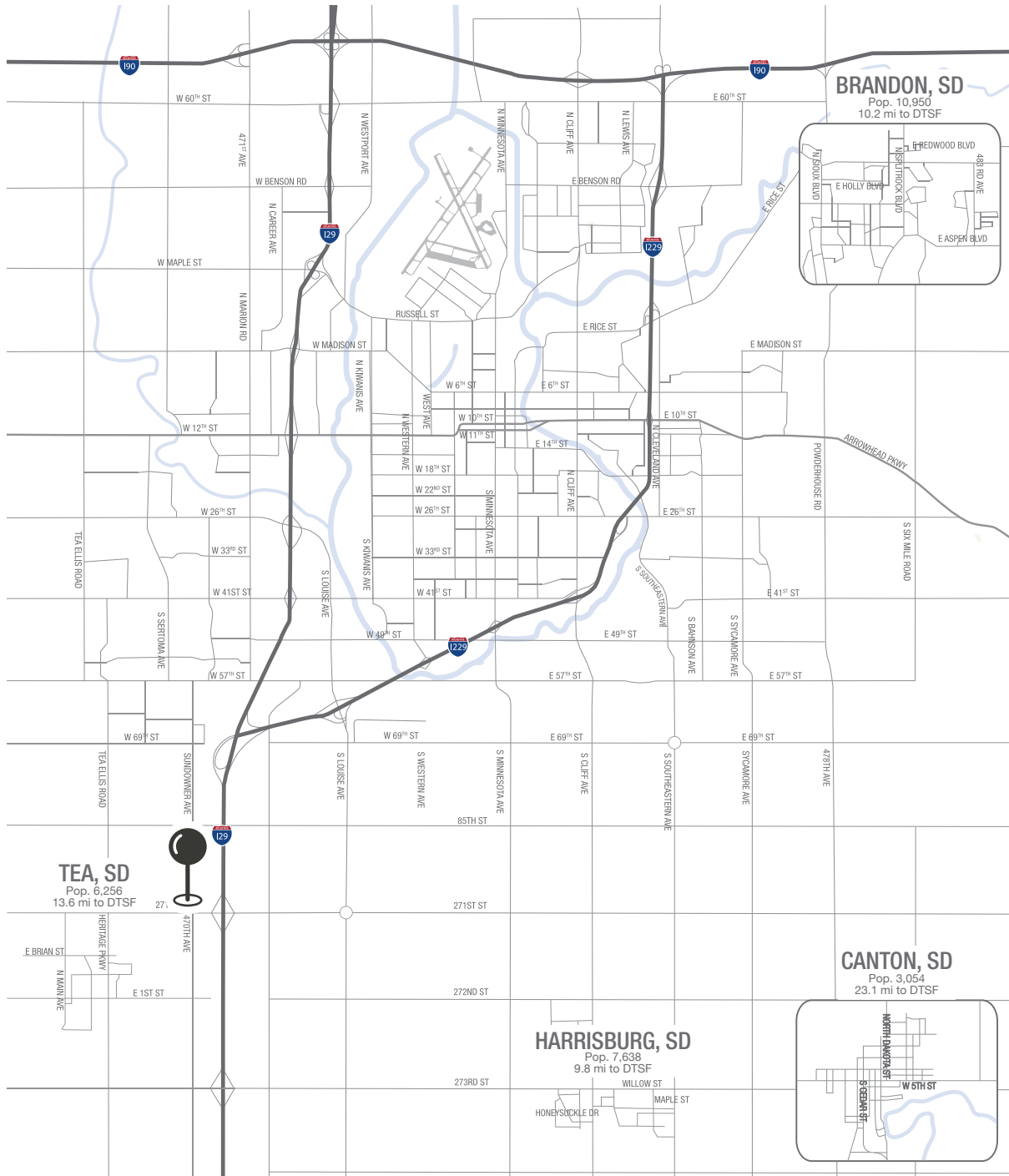
RAQUEL BLOUNT, SIOR 605.728.9092 | raquel@lloydcompanies.com

BAKKER LANDING STRIP MALL II

RETAIL SPACE FOR LEASE



MSA MAP



RAQUEL BLOUNT, SIOR 605.728.9092 | raquel@lloydcompanies.com

BAKKER LANDING STRIP MALL II

RETAIL SPACE FOR LEASE



DEMOGRAPHICS

Tea, South Dakota, is a rapidly growing community with a population growth rate of 2.83%, significantly above the national average. Located just minutes from Sioux Falls and 13.6 miles from downtown Sioux Falls, Tea acts as a charming suburb, offering the benefits of proximity to a larger city while maintaining its small-town charm.

Known for its excellent schools and strong sense of community, Tea offers a welcoming atmosphere for all. The town has experienced rapid development, with over 887 homes being built since 2018, reflecting its appeal. Tea offers a variety of amenities and services, making it an attractive destination for both residents and visitors. Located in the midwest, Tea draws in people from surrounding states, contributing to its dynamic and thriving community.

POPULATION PROJECTION		
Year	Tea	MSA
2023	6,539	304,555
2028	7,606	312,586

FAST FACTS - SIOUX FALLS



#2 Best Tax Climate in the U.S.

(Tax Foundation 2024)



Best City for Young Professionals

(SmartAsset 2023)

2.1%

Minnehaha Unemployment Rate

(January 2024)



#3 Hottest Job Market

(ZipRecruiter 2023)

1.19M

of Visitors to Sioux Falls in 2022



Third City in Economic Strength

(Policom 2023)



No Corporate Income Tax



Top Eight Happiest Cities in America

(WalletHub 2023)

TOP EMPLOYERS - MSA



10,750



8,298



3,688