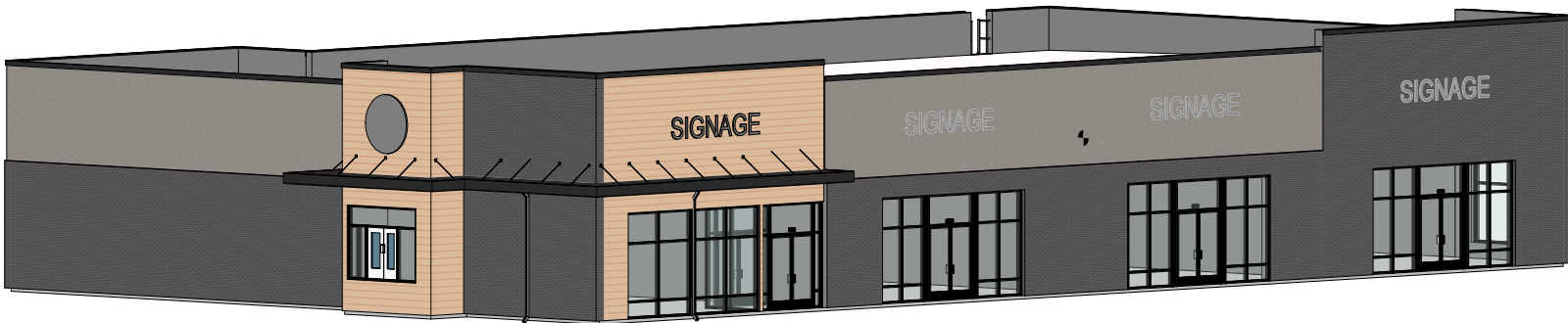


BAKKER LANDING STRIP MALL PHASE II



RETAIL SPACE FOR LEASE

Similar to:



TBD Venture Place
Tea, SD 57064



2,400 SF +/- to
10,473 SF +/-



Endcap: \$30.00 / SF NNN
Interior Space: \$25.00 / SF NNN
TIA: \$35.00 / SF

LOCATION

Located just off 271st Street in Tea, SD near the 271st Street and Interstate 29 intersection. Bakker Landing is an expanding development in one of the fastest growing counties in South Dakota.

DESCRIPTION

- High visibility with traffic counts on I-29 of 38,670 vehicles per day and 271st St of 6,098 vehicles per day
- Will be built next to phase I strip mall that includes Starbucks
- Fantastic opportunity to join Bakker Landing development just north of Tea, SD and south of Sioux Falls, SD.
- Area neighbors include Casey's, Ideal Tent & Event Rental, Omorfia Designs Inc, Sherwin Williams, Car Swap, Glass Doctor, Thornton Carpet, Orthopedic Institute, and 1-29 RV Supercenter
- Located in the fastest growing retail, office, and industrial development park in the area
- Estimated 2,500 employees near the site
- The future Veterans Parkway ends at this intersection of I-29
- Contact Broker for additional information

Professionally managed by:



RAQUEL BLOUNT SIOR

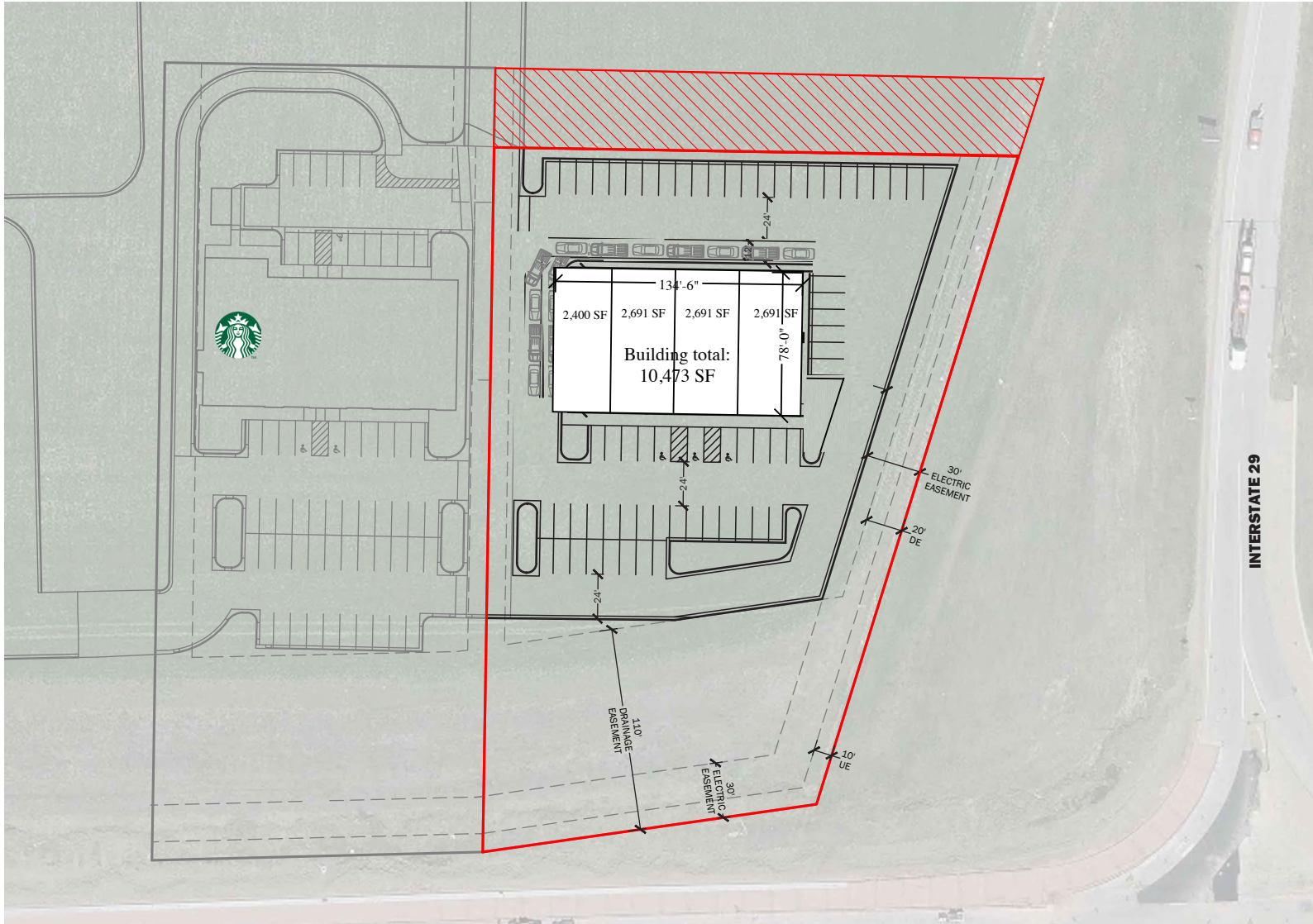
605.728.9092 | raquel@lloydcompanies.com

101 S. Reid Street Ste. 201, Sioux Falls, SD 57103 | 605.323.2820

Find out more at LloydCompanies.com | Information deemed reliable, but not guaranteed.

SITE PLAN

Concept only; subject to change



RAQUEL BLOUNT, SIOR | 605.728.9092 | raquel@lloydcompanies.com

101 S. Reid Street Ste. 201, Sioux Falls, SD 57103 | 605.323.2820

Find out more at LloydCompanies.com | Information deemed reliable, but not guaranteed.

BUILDING RENDERING

Concept only; subject to change

Similar To:



RAQUEL BLOUNT, SIOR 605.728.9092 | raquel@lloydcompanies.com

BAKKER LANDING STRIP MALL PHASE II



RETAIL SPACE FOR LEASE

SITE MAP



RAQUEL BLOUNT, SIOR 605.728.9092 | raquel@lloydcompanies.com

101 S. Reid Street Ste. 201, Sioux Falls, SD 57103 | 605.323.2820

Find out more at LloydCompanies.com | Information deemed reliable, but not guaranteed.

