

WESTOWN MARKETPLACE LAND

LAND FOR SALE



8110 W 41st St
Sioux Falls, SD 57106



1.49 acres +/-
64,854 SF +/-



\$907,956
(\$14.00 PSF)

LOCATION

Located at Westtown Marketplace, a successful new retail development with ample residential and commercial growth in the area.

DESCRIPTION

- Prominent corner lot at 41st & Purdue
- Several nationally recognizable neighbors including Fareway, Dollar Tree, Starbucks, Silverstar, Sanford, and Lewis
- Taxes due in 2024 are \$9,638.22
- Parcel is part of a mutual access easement and shared maintenance agreement
- Zoned: C-3 Commercial
- Perfect fit for your business with a rapidly growing residential neighborhood that is underserved and ready to welcome new commercial businesses
- Contact Broker for additional information

ALEXIS MAHLEN

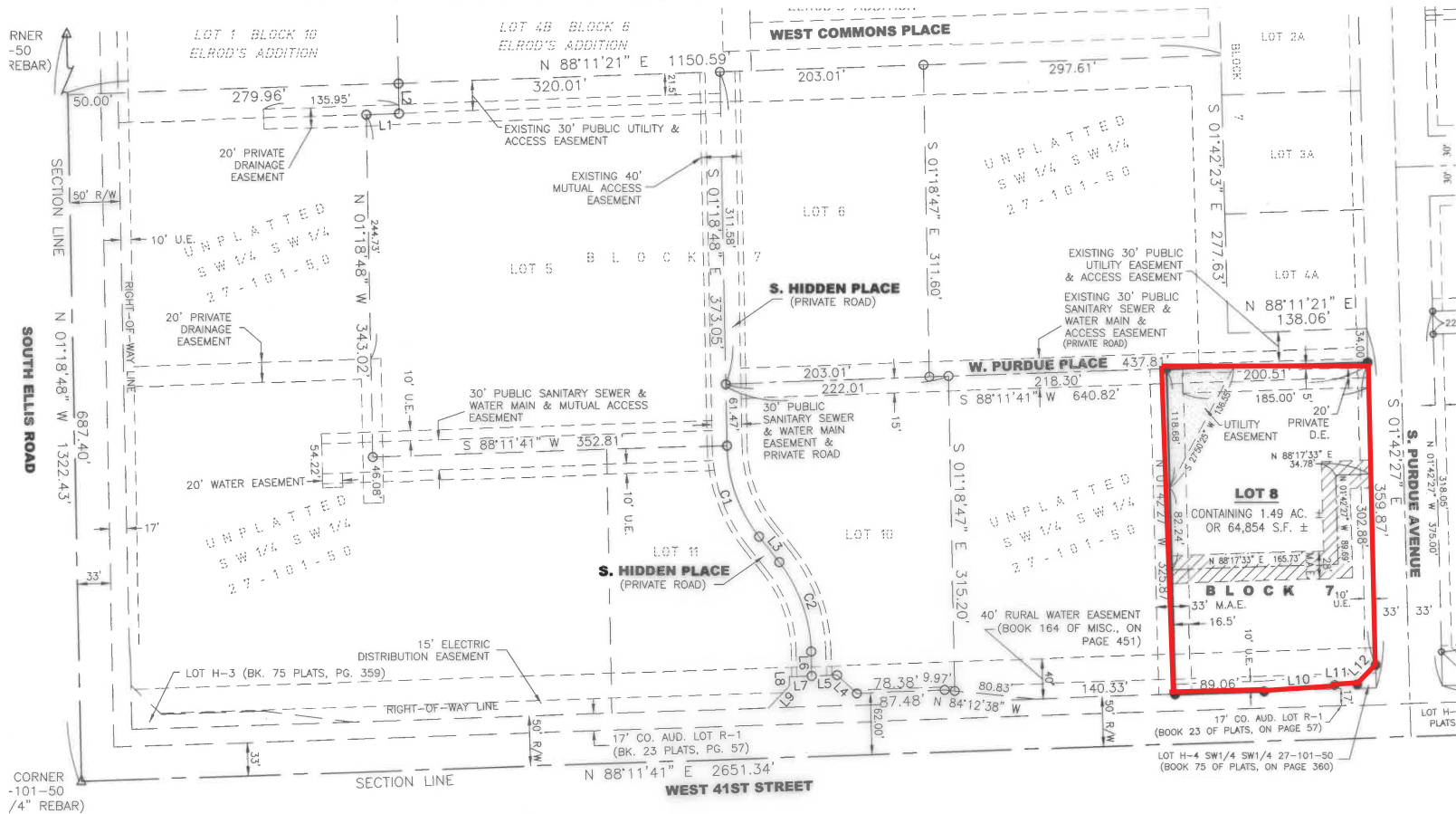
605.321.4861 | alexis@lloydcompanies.com

PLAT MAP

Concept only; subject to change

PLAT OF LOT 8 IN BLOCK 7 OF ELROD'S ADDITION

AN ADDITION TO THE CITY OF SIOUX FALLS, MINNEHAHA COUNTY, SOUTH DAKOTA



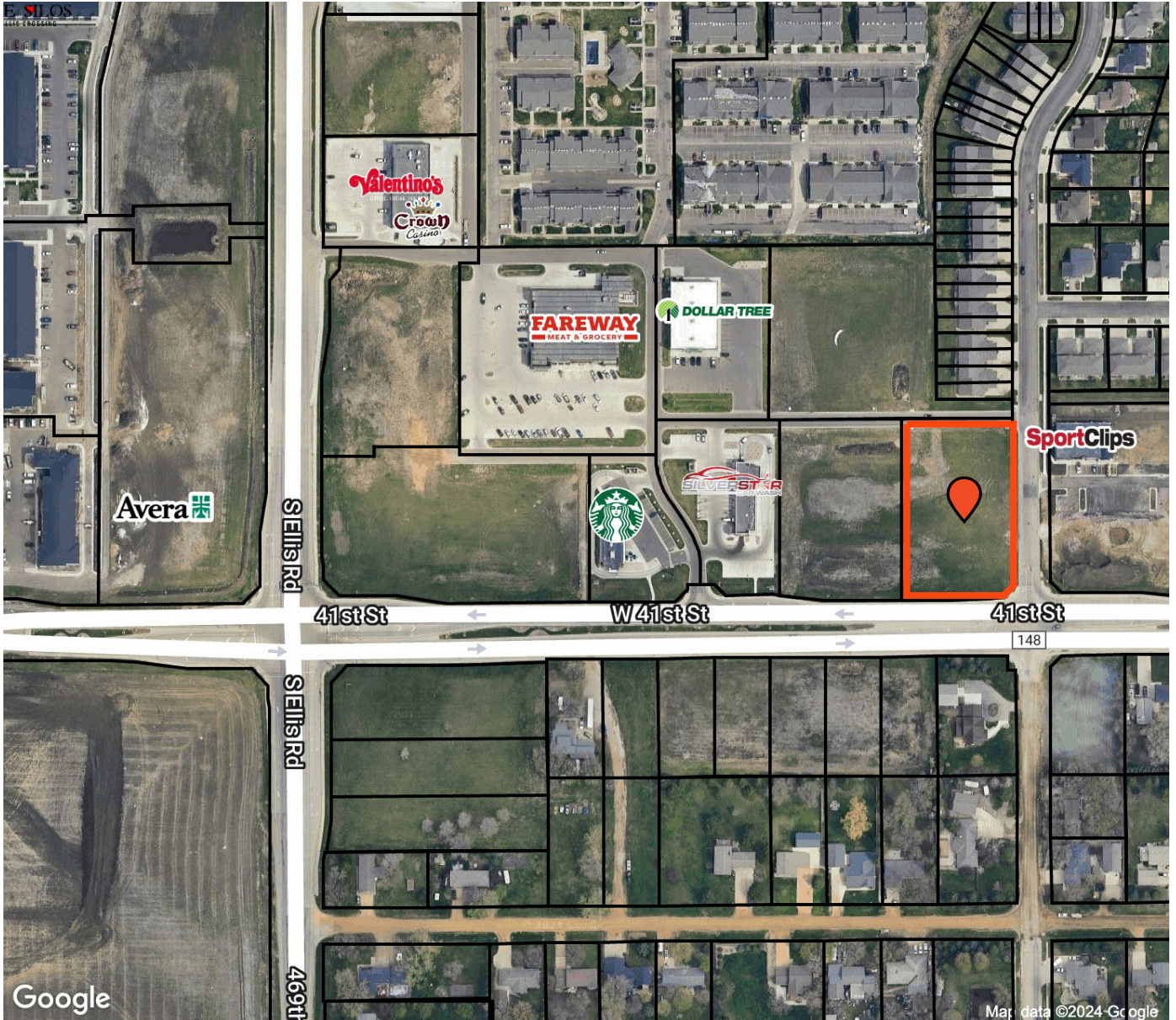
ALEXIS MAHLEN 605.321.4861 | alexis@lloydcompanies.com

150 E. 4th Place Suite 600, Sioux Falls, SD 57104 | 605.323.2820

Find out more at LloydCompanies.com | Information deemed reliable, but not guaranteed.

SITE MAP

Concept only; subject to change



ALEXIS MAHLEN 605.321.4861 | alexis@lloydcompanies.com

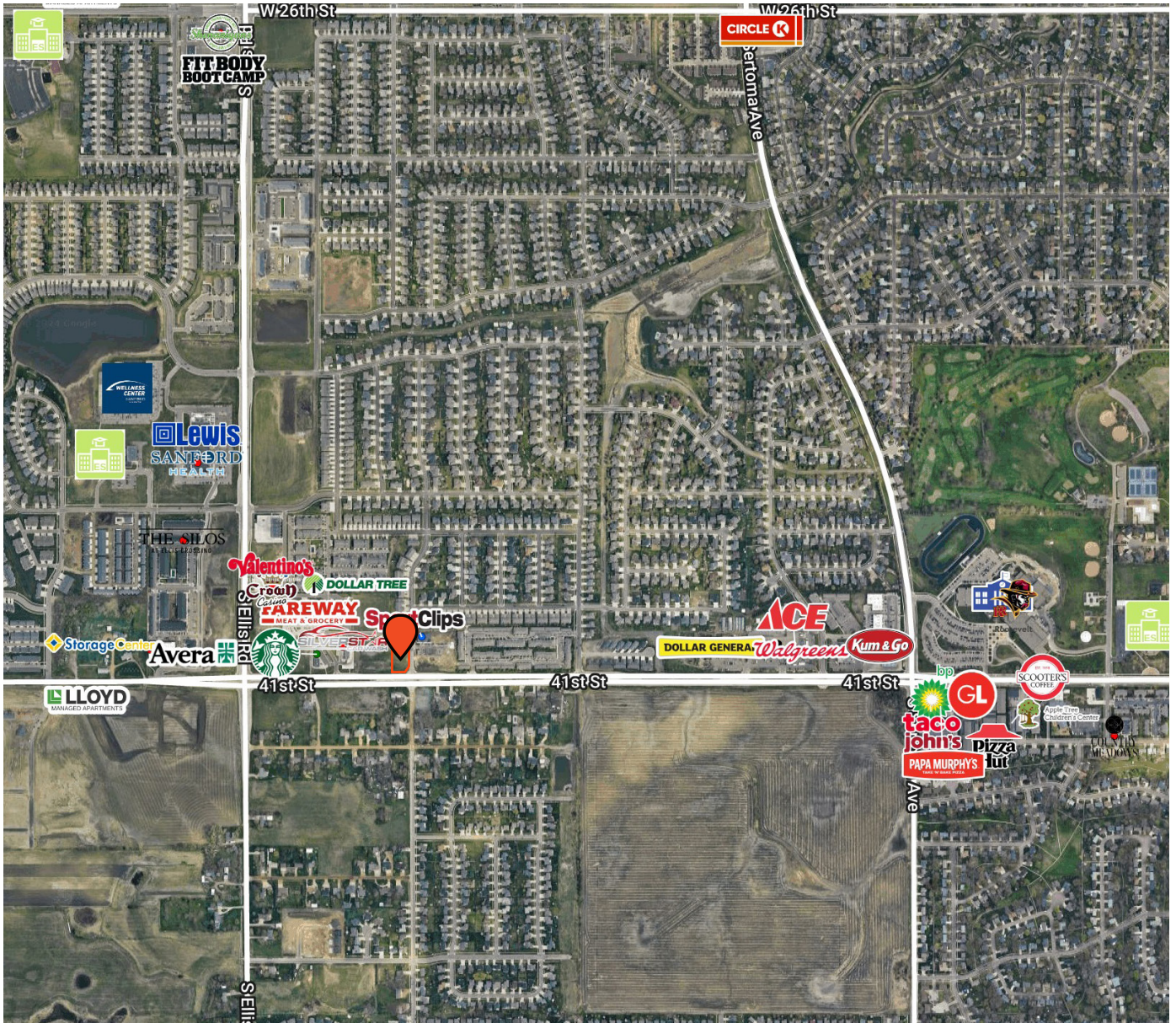
WESTTOWN MARKETPLACE LAND

LAND FOR SALE



AREA MAP

Concept only; subject to change



ALEXIS MAHLEN 605.321.4861 | alexis@lloydcompanies.com

150 E. 4th Place Suite 600, Sioux Falls, SD 57104 | 605.323.2820

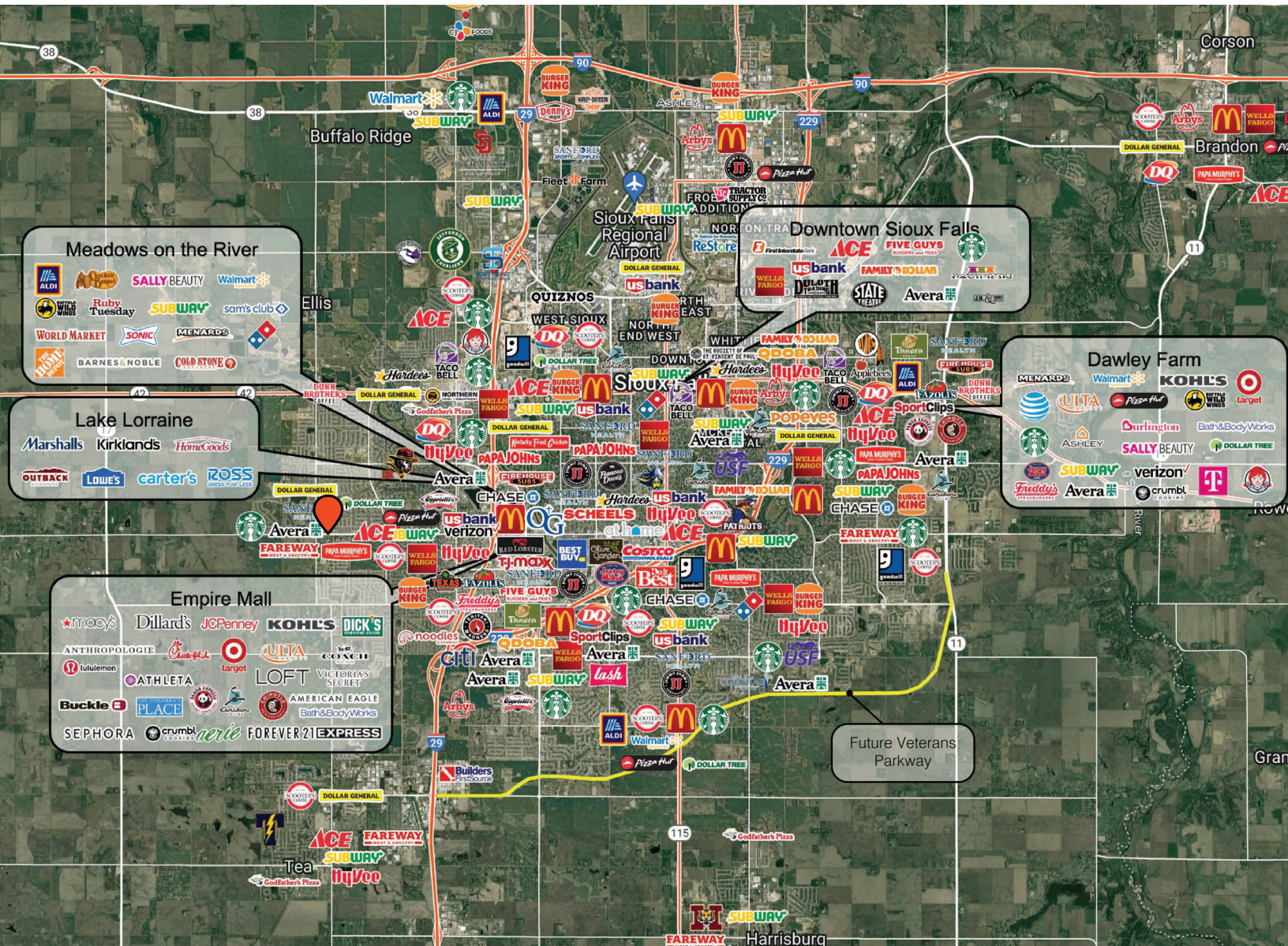
Find out more at LloydCompanies.com | Information deemed reliable, but not guaranteed.

WESTTOWN MARKETPLACE LAND

LAND FOR SALE



CITY MAP



ALEXIS MAHLEN | 605.321.4861 | alexis@lloydcompanies.com

150 E. 4th Place Suite 600, Sioux Falls, SD 57104 | 605.323.2820

Find out more at LloydCompanies.com | Information deemed reliable, but not guaranteed.