



FAWICK CENTER

DOWNTOWN BUILDING AVAILABLE



FOR SALE

\$625,000
15,020 SF

SIZE

- Building: 15,020 SF
- Lot: 23,700 SF

PRICE

- \$625,000

LOCATION

- Great opportunity to purchase a downtown property with much potential! The property is positioned at S. 2nd Avenue and E. 12th Street, and is located near several downtown shops, restaurants and professional services.

DESCRIPTION

- The site offers off-street parking and a convenient, central location
- Area neighbors include several new apartment units, the USPS, Game Chest and Sunshine Foods
- Zoned: DTPUD
- Two-story structure with a partial basement, built in 1960
- 2018 taxes payable in 2019 were \$18,456.80
- Downtown has seen strong growth and forecasts continued new development!
- Join the city's center that features business, finance, government, arts, culture and historic architecture
- Contact Broker for additional information

Find out more at lloydcompanies.com

SCOTT BLOUNT

605-231-1882

scott@lloydcompanies.com

101 S. Reid Street | Ste. 201 | Sioux Falls, SD 57103 | 605.231.1738

Information deemed reliable, but not guaranteed.



LLOYD
COMPANIES

FAWICK CENTER

DOWNTOWN BUILDING AVAILABLE



SCOTT BLOUNT
605-231-1882
scott@lloydcompanies.com

SITE AERIAL

101 S. Reid Street | Ste. 201 | Sioux Falls, SD 57103 | 605.231.1738

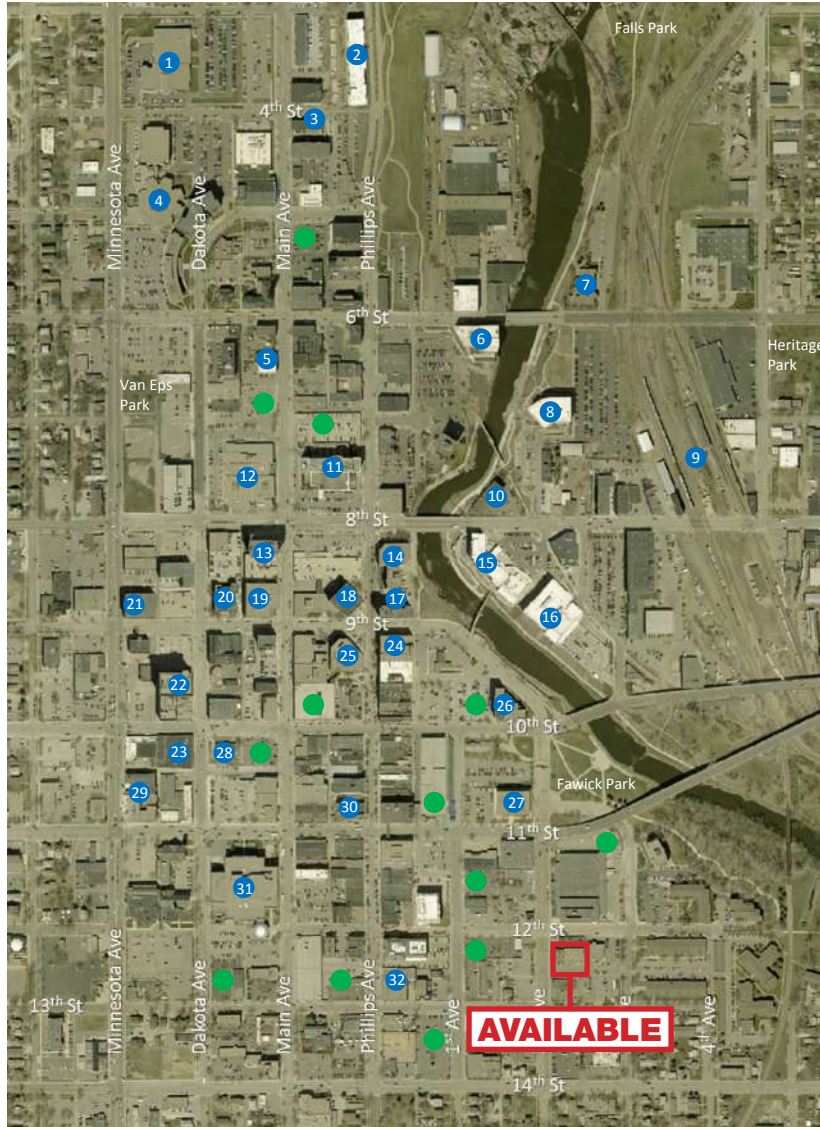
Information deemed reliable, but not guaranteed.





FAWICK CENTER

DOWNTOWN BUILDING AVAILABLE



DOWNTOWN STATS

Estimated Annual Pedestrians:
2,920,000

Estimated annual visitors to Falls
Park & Downtown: 930,923

Downtown Employees: 17,000

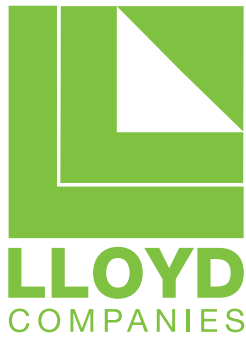
Downtown Residents: 2,500

Information provided by DTSF 2017
Annual Report

DOWNTOWN MAP

- | | | | |
|---|--|--|-------------------------------|
| 1. Law Enforcement Center | 9. Burlington Northern Santa Fe (BNSF) Railway | 18. Wells Fargo | 28. Carnegie Town Hall |
| 2. Phillips Avenue Lofts | 10. Country Inn & Suites | 19. First Dakota National Bank | 29. YMCA |
| 3. Uptown Exchange Lofts | 11. Holiday Inn | 20. City Hall | 30. Home Federal |
| 4. Minnehaha County Courthouse & Administration | 12. Library | 21. First Bank & Trust | 31. Washington Pavilion |
| 5. Orpheum Theater | 13. U.S. Bank | 22. Century Link | 32. U.S. Federal Court House |
| 6. Raven Industries | 14. Pioneer Square | 23. Argus Leader | |
| 7. Killian Community College | 15. Hilton Garden Inn | 24. First National Bank in Sioux Falls | ● = Public Parking Lots |
| 8. Cherapa Place | 16. Lumber Exchange – CNA Surety | 25. The Plaza – DocuTAP | # = Major Downtown Businesses |
| | 17. Great Western Bank | 26. Great Western Bank | |
| | | 27. Avera | |

SCOTT BLOUNT
605-231-1882
 scott@lloydcompanies.com



FAWICK CENTER

DOWNTOWN BUILDING AVAILABLE

SIoux FALLS MSA DEMOGRAPHICS

Sioux Falls is one of the fastest-growing areas in the nation with a population growth rate nearly four times the national average. As the largest retail center between Denver and the Twin Cities, Sioux Falls offers the consumer a vast selection of goods with thousands of retail stores scattered throughout the metro area. Employing approximately 12.4 percent of the metro labor force, the retail sector has a primary market area of 650,000+ consumers and draws shoppers from a four state area.

Source: City of Sioux Falls Planning Department
<http://www.siouxfallsdevelopment.com/demographics.cfm>

*Prior to December 31, 1992, the Sioux Falls Metropolitan Statistical Area consisted of Minnehaha County. On December 31, 1992, the Federal Office of Management and Budget revised the MSA designation to include Lincoln County. The 2005-2012 MSA figures include the counties of McCook & Turner.

Major Employers:

- Sanford Health - 9,542
- Avera Health - 8,298
- Smithfield Foods - 3,600
- Sioux Falls School District - 3,400
- HyVee Food Stores - 3,116
- Wells Fargo - 2,262
- Citi - 1,800
- Good Samaritan Society - 1,500
- Walmart/Sam's Club - 1,460

POPULATION		
YEAR	SIoux FALLS	MSA*
2010	153,888	228,261
2014	165,800	240,202
2018	183,200	266,700

PROJECTED POPULATION		
YEAR	SIoux FALLS	MSA
2020	185,100	285,387
2025	201,800	325,391
2030	217,000	370,693
2035	233,200	422,608

AGE DISTRIBUTION	
AGE (YEARS)	SIoux FALLS
0-19	28.1%
20-64	59.2%
65+	12.6%

SIoux FALLS HIGHLIGHTS

- Forbes has also identified Sioux Falls as the nation's top small city for business and careers.
- Forbes named Sioux Falls #20 in Job Growth, #30 in Cost of Doing Business, #41 in Education and #1 in their 2015 top 10 list of Up and Coming Cities for Recent College Grads.
- Sioux Falls MSA has the 8th strongest local economy in the US, according to POLICOM Corporation's annual economic strength rankings in 2015.
- WalletHub ranked Sioux Falls #1 in 2014 for "Wallet Wellness" which gages the connection between physical, financial and emotional health, #4 as best city for families in 2016, #4 as best city in America to find a job in 2015, and #9 for best-run city in America in 2015.
- League of American Bicyclists recognized Sioux Falls with a bronze-level as a bicycle-friendly community.
- MoneyRates.com classified Sioux Falls as #7 for Best Cities for Young Entrepreneurs, in the top 10 nationally for Young Adult Affluence and #2 for Cities with Favorable Business Tax Climates.
- In 2016, MSN Money listed Sioux Falls #10 in this list of the 25 Most Livable Cities in the U.S.
- Sioux Falls ranked #8 in 2015 for well-being, according to the Gallup-Healthways 2015 Well-Being Index.
- Sioux Falls was mentioned as one of 25 happiest, healthiest cities in America by Prevention Magazine, winning the all-around healthiest category due to its highest levels of self-reported health. Easy commutes, low crime and unemployment, and good access to health insurance were also highly recognized. Healthline also recognized Sioux Falls among their top 10 list of Healthiest Small Towns in the U.S. in 2016.
- Livability.com recognized Sioux Falls in the top ten for "Best Place to Live in 2015", mentioning its big-city mixture of culture, business and industry.
- Sioux Falls came in at #6 in WalletHub's 2018 Best-Run Cities in America ranking. The list assessed 150 of the most populated cities nationwide by comparing the services residents receive against the city's total budget. A "quality of services" score was calculated according to 35 metrics related to the categories of financial stability; education; health; safety; economy; and infrastructure and pollution.
- SmartAsset ranked Sioux Falls as the #1 US city for young professionals in 2017 and 2018. The ranking took into account the city's median gross rent, five-year change in median earnings, entertainment and arts establishments, job diversity, unemployment rate, labor-force participation rate, and the number of people age 25 to 34 in the city.

SCOTT BLOUNT
 605 **231-1882**
 scott@lloydcompanies.com

