




# KG LAND AT MADISON & MARION

LAND FOR SALE



 1015 N. Marion Road & 5300 W. Madison Street  
Sioux Falls, SD 57107

 89,596 SF +/-

 \$7.00 / SF

## LOCATION

Desirable northwest location in one of the fastest growing residential areas of Sioux Falls with easy access to I-29 via the Madison Avenue interchange.

## DESCRIPTION

- Near the new Jefferson High School, Career & Technical Education Academy, northside Walmart, Southeast Technical Institute, and USD Community College for Sioux Falls
- Surrounded by several new housing developments
- Fantastic opportunity to purchase commercial land located in a rapidly growing area in need of fast food, medical services, hair salons and more neighborhood amenities
- Zoned C-2 Commercial
- Situated between Jefferson High School and McGovern Middle School, with over a thousand projected homes are expected to be built in over the next several years in the Harvest Hills, Jefferson Heights, and Hazeltine developments
- Contact Brokers for additional information

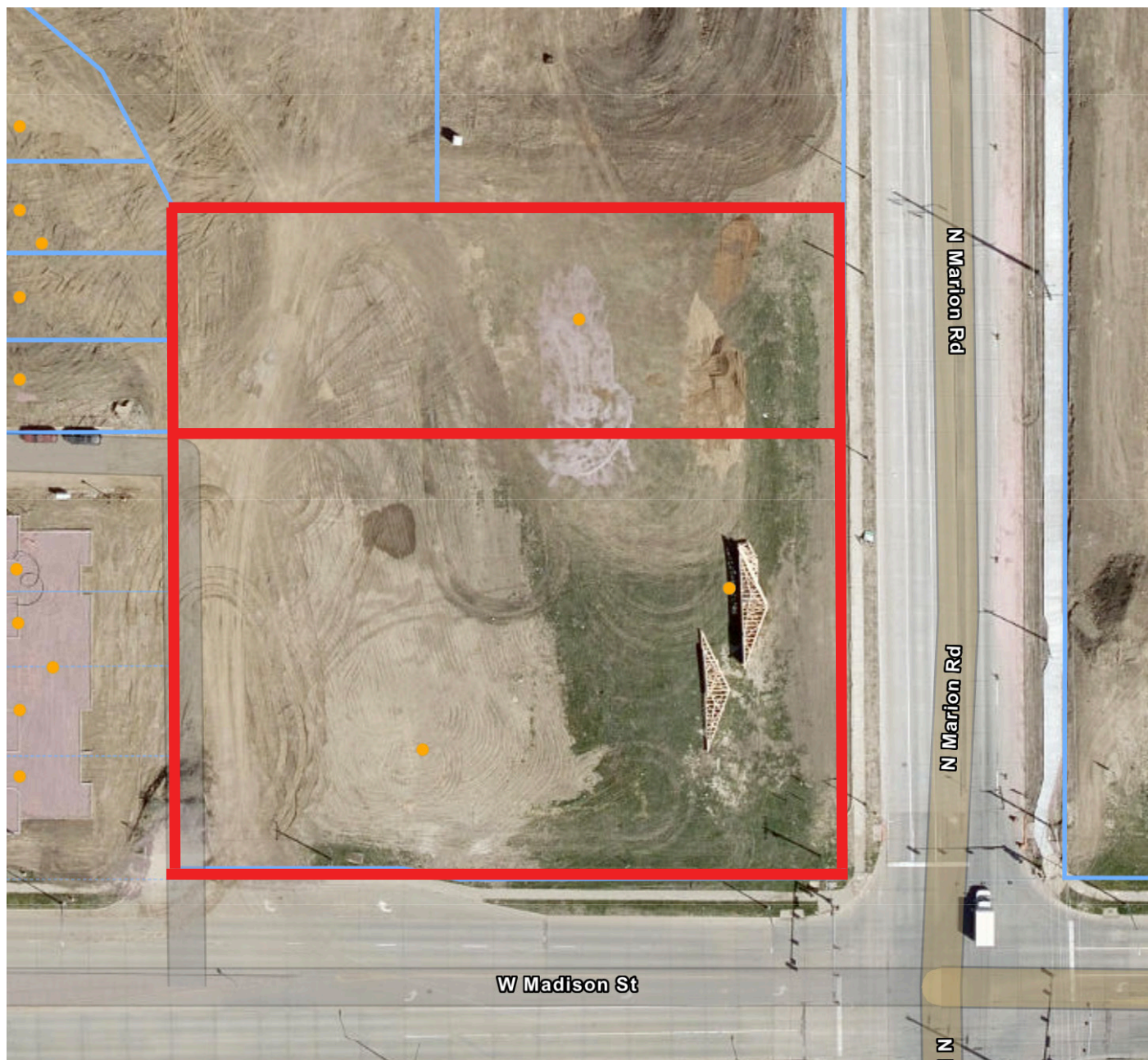
**RAQUEL BLOUNT** SIOR | 605.728.9092 | raquel@lloydcompanies.com

**KRISTEN ZUEGER**, SIOR | 605.376.1903 | kristen.zueger@lloydcompanies.com

101 S. Reid Street Ste. 201, Sioux Falls, SD 57103 | 605.323.2820

Find out more at [LloydCompanies.com](http://LloydCompanies.com) | Information deemed reliable, but not guaranteed.

## PARCEL



**RAQUEL BLOUNT, SIOR** 605.728.9092 | [raquel@lloydcompanies.com](mailto:raquel@lloydcompanies.com)  
**KRISTEN ZUEGER, SIOR** 605.376.1903 | [kristen.zueger@lloydcompanies.com](mailto:kristen.zueger@lloydcompanies.com)

### AREA MAP



**RAQUEL BLOUNT, SIOR** 605.728.9092 | raquel@lloydcompanies.com  
**KRISTEN ZUEGER, SIOR** 605.376.1903 | kristen.zueger@lloydcompanies.com