

SANFORD
SPORTS
COMPLEX



LAND FOR SALE

SIoux FALLS
SOUTH DAKOTA

 **LLOYD**

ABOUT THE COMPLEX

SANFORD SPORTS COMPLEX



The Sanford Sports Complex in Sioux Falls, South Dakota, stands as a premier 520-acre destination for sports, recreation, and community events in the region—a thriving hub for sports, recreation, and community engagement. Its strategic location right off two major interstates, combined with top-notch facilities and diverse offerings, make it a destination of choice for both locals and visitors. Home to elite training centers, expansive indoor and outdoor fields, and a vibrant array of dining and retail options, the complex is designed to support athletes and families. Additionally, located near the 900-acre Foundation Park and in proximity to significant employers and call centers, including Amazon and CJ Foods, the Sanford Sports Complex enhances its appeal for new businesses.

The complex is also the proud home of the Sioux Falls Skyforce, the NBA G League affiliate of the Miami HEAT. Furthermore, it hosts nationally recognized events such as the 2024 ATP Tour professional men's tournament, marquee college basketball games featuring top teams like Baylor, Gonzaga, Iowa, and West Virginia, the annual Crossover Classic, high-profile MMA events like those from the Legacy Fighting Alliance (LFA), as well as NCAA and NAIA national championships in men's basketball, women's basketball, and women's volleyball, firmly establishing itself as a premier sports destination.



COMPLEX TENANTS

"WORK, LIVE, STAY, PLAY."

SANFORD
SPORTS
COMPLEX



LOT	SIZE*	PRICE	TYPE
2	2.4 acres +/-	\$10.00/SF	Commercial
3	1.6 acres +/-	\$10.00/SF	Quick Serve
4	8.7 acres +/-	\$8.00/SF	Retail/Office
5	20.4 acres +/-	\$10-12/SF	Retail/Commercial
6	6.6 acres +/-	\$8.00/SF	Office/Retail/Stadium
7	11.02 acres +/-	\$8.00/SF	Office/Retail/Athletic Facility
8	14.05 acres +/-	\$7.00/SF	Retail/Office
9	2.61 acres +/-	\$6.00/SF	Retail/Office/Athletic Facility

* All lots are subdividable to meet desired size & use.



COMPLEX MASTER PLAN

SANFORD
SPORTS
COMPLEX

WATCH
THE
MASTER
COMPLEX
PLAN



520
TOTAL
ACRES

170
ACRES
ATHLETICS

66
ACRES
RESIDENTIAL

47
ACRES
RECREATION

27
ACRES
MIXED USE

20
ACRES
ADMIN

10
ACRES
HOSPITALITY

AVAILABLE LAND



COMPLEX PARTICIPANTS

SANFORD SPORTS COMPLEX



SANFORD PENTAGON

- 341.8K Annual Visits
- Over 100K SF of courts
- Designed for league and tournament play



GREAT SHOTS

- 258K Annual Visits
- 54k SF building (300-person occupancy)
- 3 levels with 60 total bays



SANFORD FIELDHOUSE

- 285.5K Annual Visits
- Over 85K SF with 62K SF being Field Turf
- Home to Sanford Sports Performance/Academy



YOUTH FOOTBALL

- 60 acres with 9 fields (5 lighted)
- 3 more fields to be added in future phase
- City bike trail connection



SCHEELS ICE PLEX

- 280.7K Annual Visits
- 3 indoor full-size rinks
- Open skate & tournaments



DAKOTA ALLIANCE SOCCER

- 8 synthetic turf multipurpose soccer fields
- Each year 7K athletes ranging from 3 - 19 participate in this club



HUETHER FAMILY MATCH POINTE

- 50K Annual Visits
- 6 side-by-side Championship Courts
- 40-ft high ceilings



POWER & GRACE GYMNASTICS

- 13K Annual Visits
- 16K SF gym
- Two competition-sized floors



SANFORD DIAMONDS

- 5 Field Turf softball fields
- 5 Field Turf baseball fields
- Fled lighting & digital scoreboards



HOSPITALITY

- Fairfield Inn & Suites by Marriott - 82 rooms
- Comfort Inn & Suites by Choice Hotels - 86 rooms
- Blue Rock Bar & Grill - remodeled in 2019

2025 DEMOGRAPHICS

	Median HH Income	Median Home Value	Bachelor's Degree or Higher	Median Age	Persons per HH
Visitors (Captured Market)	\$86.7K	\$338K	40.2%	35.9	2.56
Sioux Falls MSA Average	\$83.1K	\$328K	38.8%	36.9	3.14
South Dakota Average	\$75.5K	\$288K	34.0%	38.5	2.43
United States Average	\$81.6K	\$370K	37.2%	39.6	2.50

Property details contained herein are intended for general informational purposes only. Lloyd Real Estate, LLC has not independently verified any of the information that it has been provided and makes no representation or warranty of any kind as to its accuracy or completeness. Use this information at your own discretion, and always consult with qualified professionals or experts in the relevant field for specific guidance. Nothing contained herein shall be deemed to constitute legal, financial, or professional advice. Demographic & traffic/visitor data provided by Placer.ai.

REGIONAL VISITOR DRAW

SANFORD
SPORTS
COMPLEX



2.3M
Annual Visits



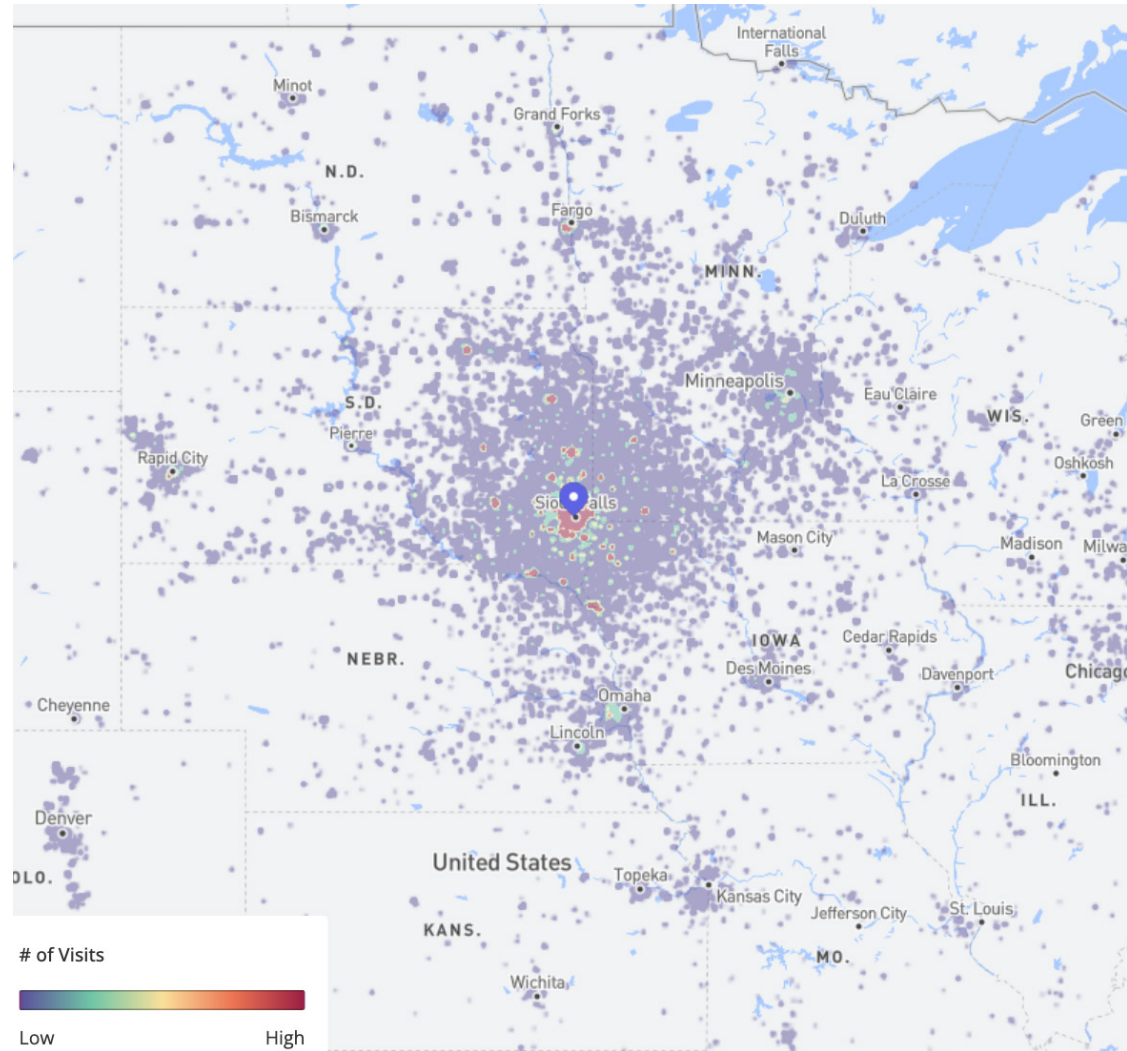
509.7K
Annual Visitors



109 min
Avg . Dwell Time



4.51x
Visit Frequency

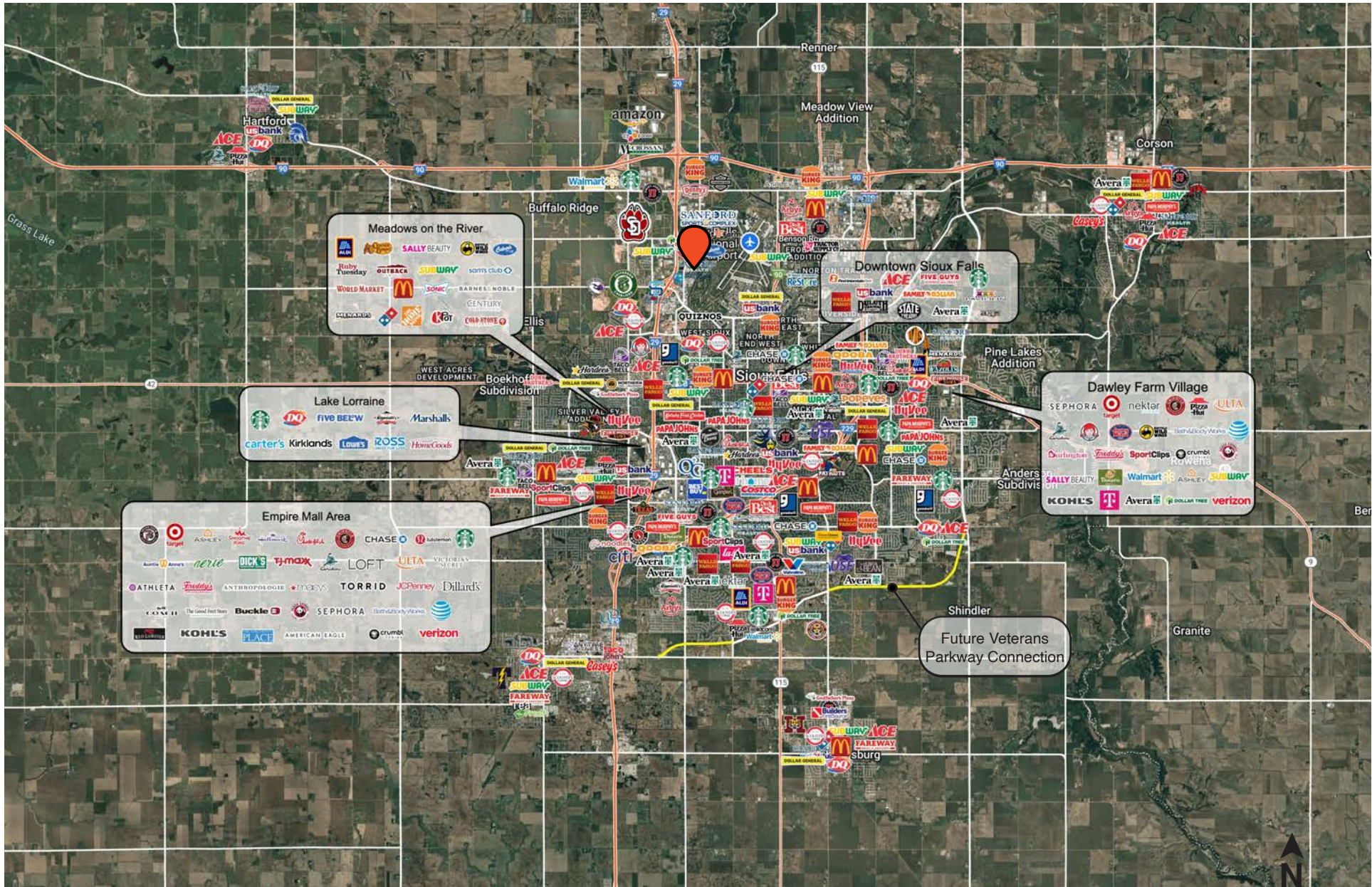


Sanford Sports Complex / 2405 W Benson Rd, Sioux Falls, SD 57107 | Based on Home Location, by Visits
| Min. Visits: 1 | Dec 1st 2024 to Nov 30th 2025 | Home locations are obfuscated for privacy and randomly placed within a census block. They do not represent actual home addresses. Data provided by Placer Labs.

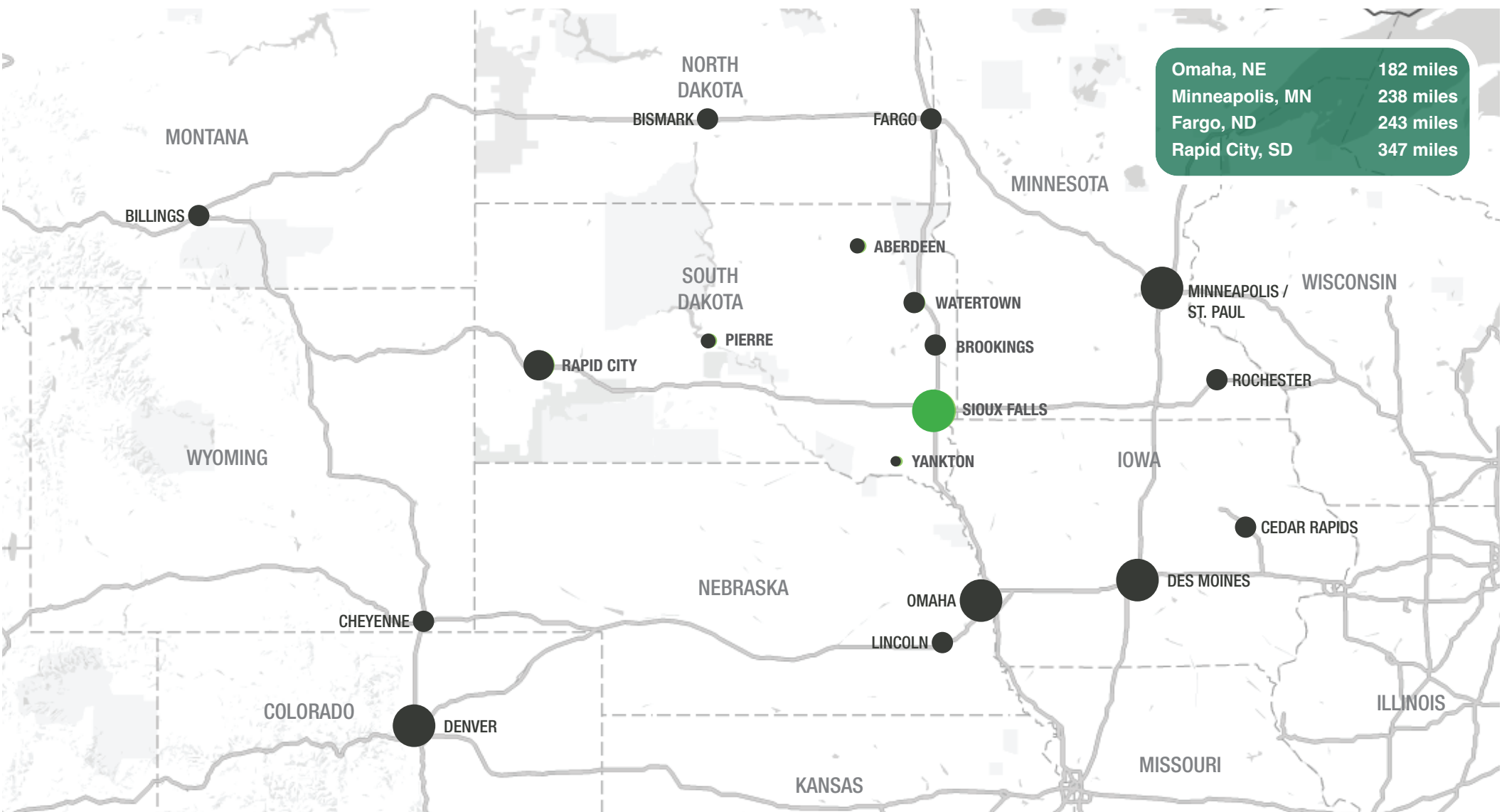
**SANFORD
SPORTS
COMPLEX**



SIOUX FALLS MAP



TRADE AREA



SIOUX FALLS DEMOGRAPHICS



Sioux Falls, South Dakota’s largest city, is one of the fastest growing areas in the nation with population growth rate nearly four times the national average. It serves as the largest retail hub between Denver and the Twin Cities and offers residents & visitors an ample selection of commodities and services. Being located in the heart of the Midwest, Sioux Falls draws shoppers from a four-state area. Employment across the state is projected to increase by 7.7% by 2032, further solidifying its reputation as an economic leader.

Sioux Falls has low business costs with a high quality of life. There’s no state, corporate or personal income tax, no inheritance tax and no limits to what your business can achieve.

POPULATION PROJECTION		
Year	Sioux Falls	MSA
2025	219,588*	314,596
2030	235,786	341,319

*Source: The City of Sioux Falls

FAST FACTS



#1 City for Small Businesses
(B2B Review 2025)



#2 Best Tax Climate in the U.S.
(Tax Foundation 2024)



#3 Hottest Job Market
(ZipRecruiter 2023)



Top 25 Safest Cities in America
(WalletHub 2025)



No Corporate Income Tax



Third City in Economic Strength
(Policom 2023)

4M

of Visitors to Sioux Falls in 2024

1.8%

Sioux Falls MSA Unemployment Rate
(September 2025)

TOP EMPLOYERS

SANFORD
HEALTH
10,929

Smithfield
3,239

Avera
8,200

HyVee
EMPLOYEE OWNED
2,390



3,627

amazon
1,600

SANFORD SPORTS COMPLEX



KRISTEN ZUEGER, SIOR

BROKER ASSOCIATE

kristen.zueger@lloydcompanies.com

605-376-1903



RAQUEL BLOUNT, SIOR

VP OF COMMERCIAL REAL ESTATE

raquel.blount@lloydcompanies.com

605-728-9092

150 E. 4th Place | Suite 600 | Sioux Falls, SD 57104
605.323.2820 | LloydCompanies.com

Property details contained herein are intended for general informational purposes only. Lloyd Real Estate, LLC has not independently verified the provided information and makes no representation or warranty of any kind regarding its accuracy or completeness. Traffic, visit, and sale data within this document, sourced from a third-party provider, is based on tracking data from mobile/cellular devices. Use this information at your own discretion, and always consult with qualified professionals or experts in the relevant field for specific guidance. All interested parties are advised to take appropriate measures to verify all information set forth herein. Nothing contained herein shall be deemed to constitute legal, financial, or professional advice.